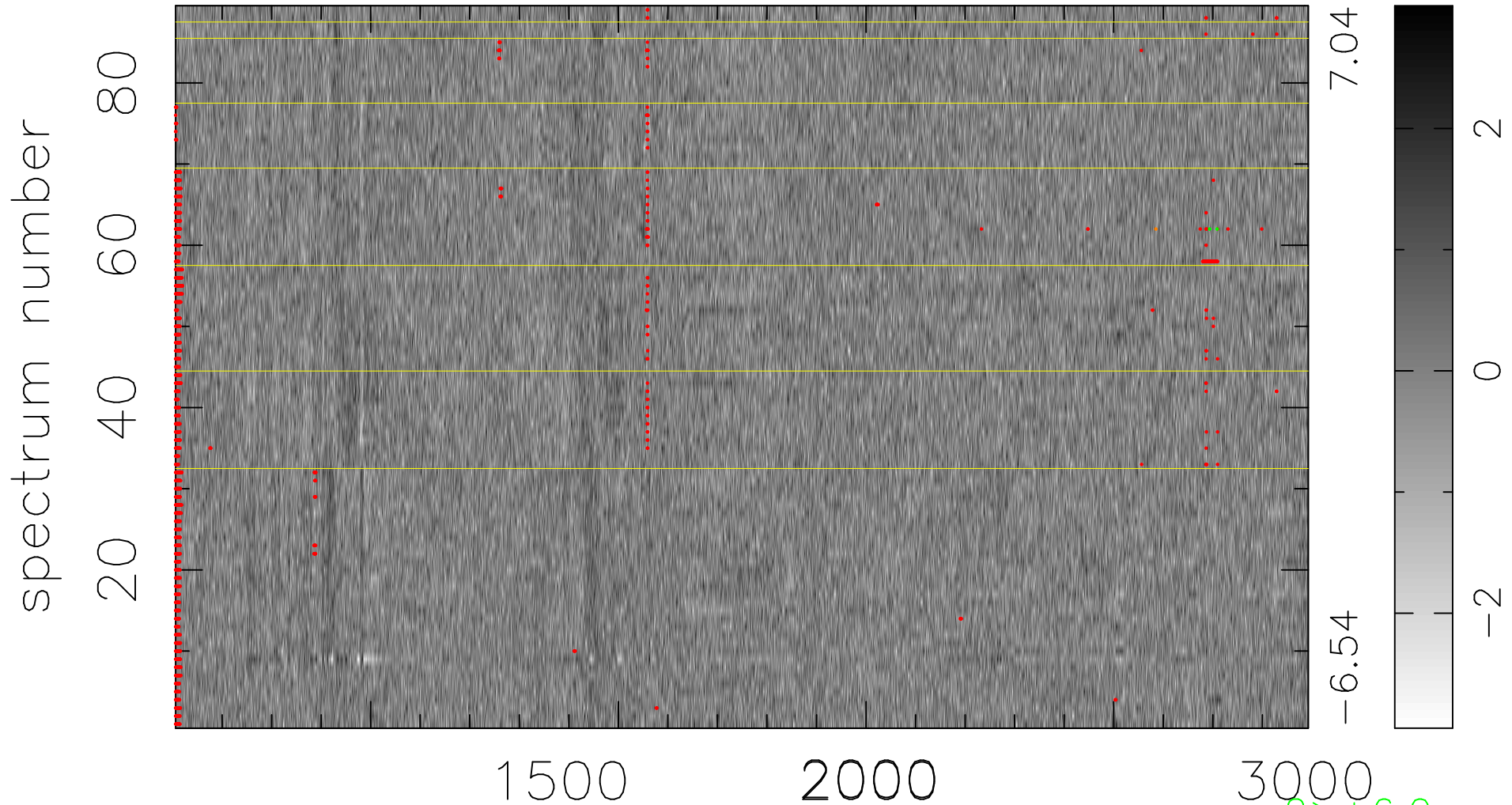


$$\chi(\lambda, t) = (\text{Data} - \text{Model } \text{AC}_5\text{B}_7\text{F}) / \sigma \chi$$

$$\chi^2 / (407086 - 5468) = 0.901 \Rightarrow 1.009$$

4574 × 89



bad:1605=0.39% λ (Å) $z = 2.42579$

2 > +6.0σ

1 < -6.0σ