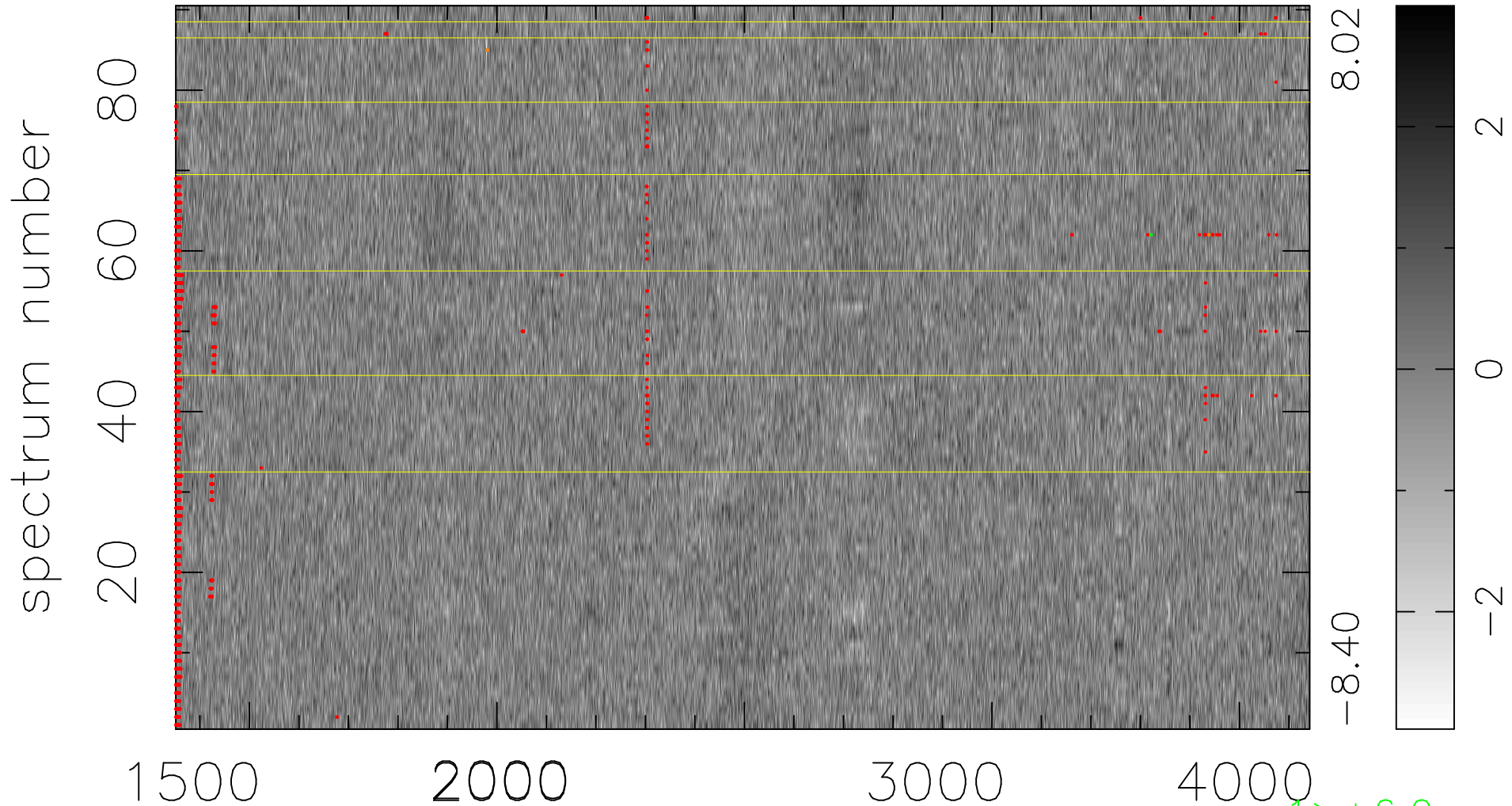


$$\chi(\lambda,t) = ( \text{Data} - \text{Model } AC_5 ) / \sigma \chi$$

$$\chi^2 / (412380 - 4956) = 0.938 \Rightarrow 1.008$$

4582x90



bad:1513=0.37%  $\lambda$  (Å)  $z = 1.43135$

1 > +6.0 $\sigma$

3 < -6.0 $\sigma$