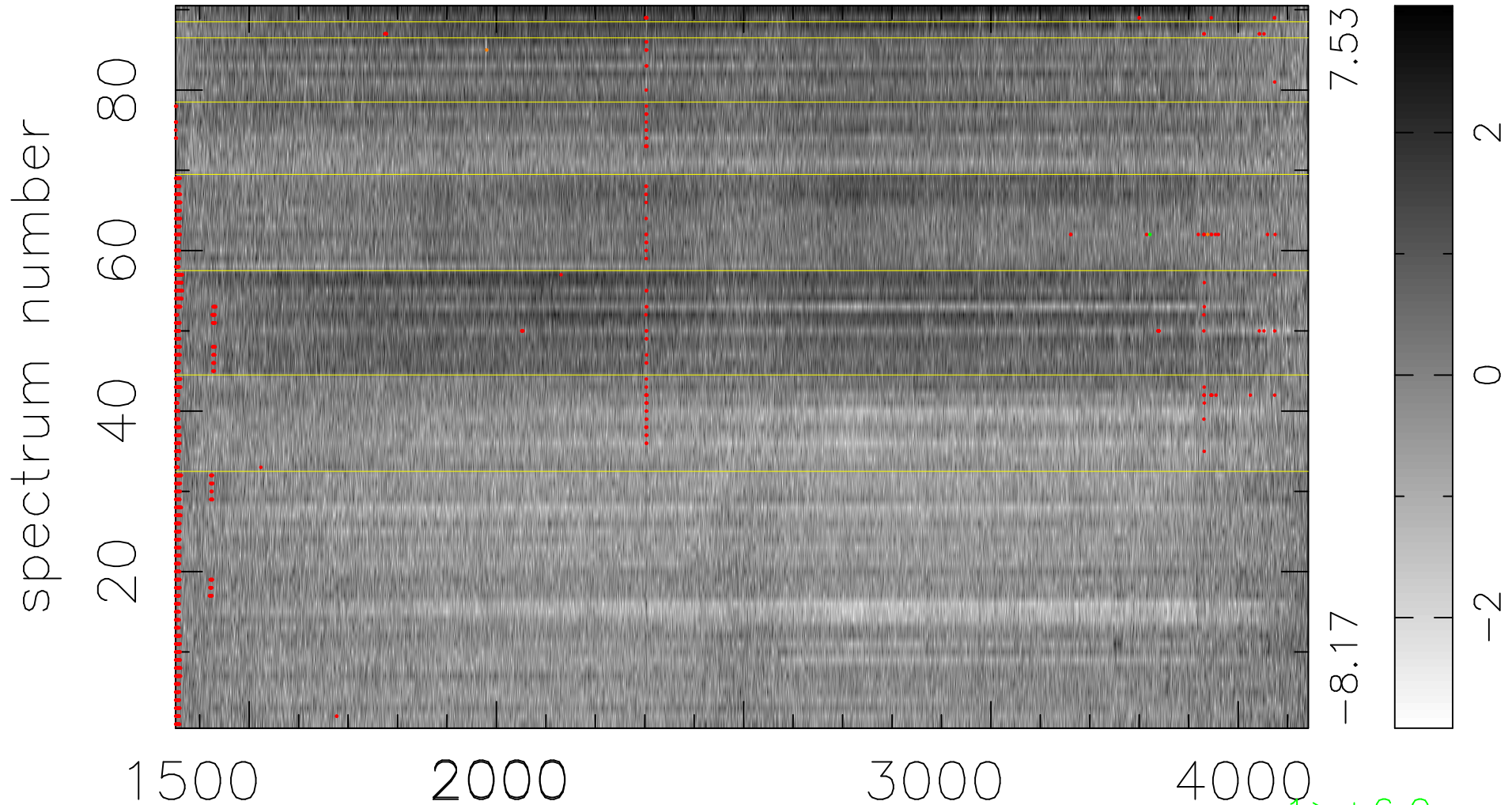


$$\chi(\lambda, t) = (\text{Data} - \text{Model A}) / \sigma \chi$$

$$\chi^2 / (412380 - 4956) = 1.425 \Rightarrow 1.009$$

4582x90



bad:1513=0.37% λ (Å) $z = 1.43135$

1 > +6.0σ

2 < -6.0σ