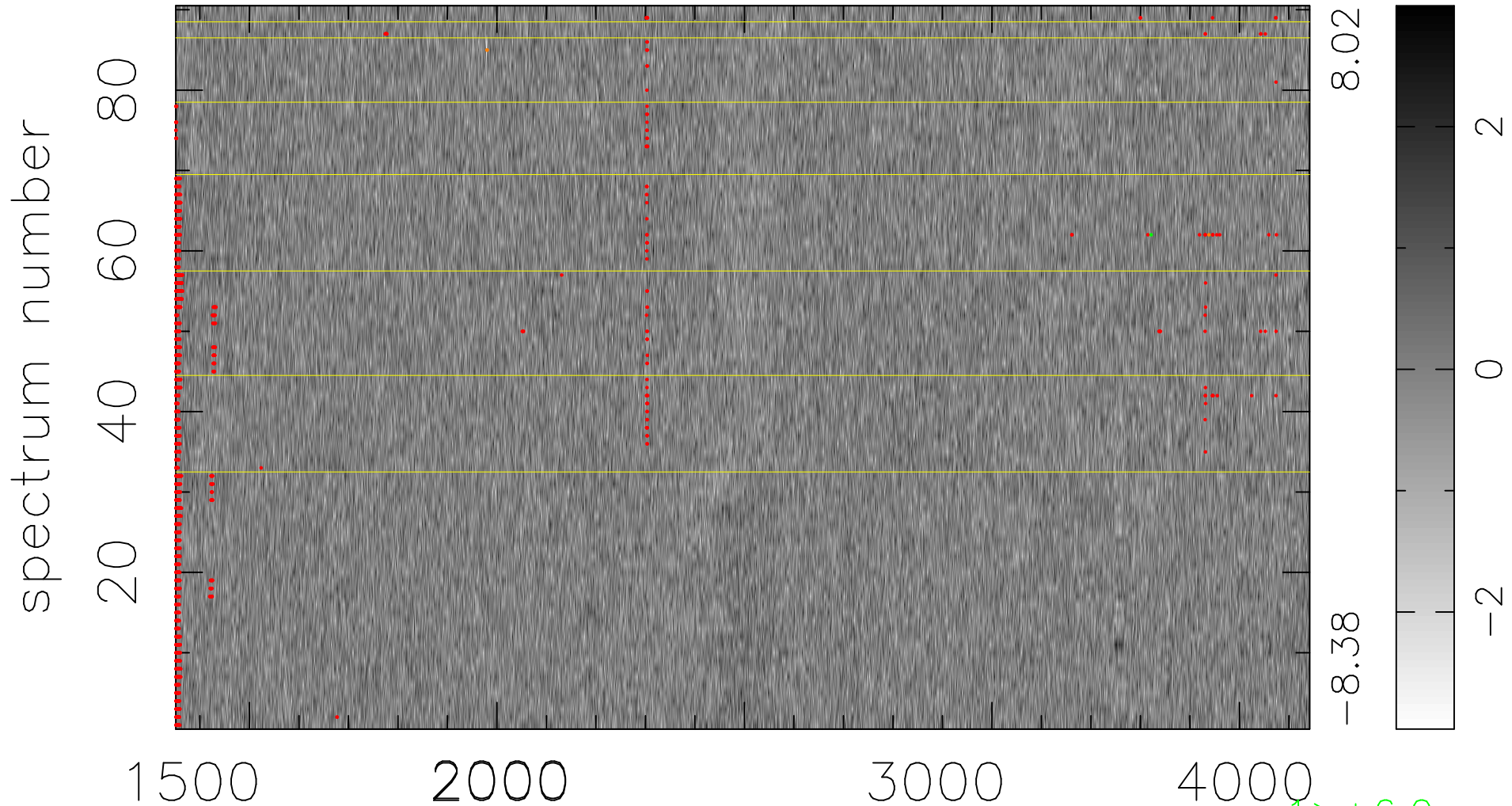


$$\chi(\lambda, t) = (\text{Data} - \text{Model } \text{AC}_5\text{B}_4\text{F}) / \sigma \chi$$

$$\chi^2 / (412380 - 5192) = 0.933 \Rightarrow 1.008$$

4582 × 90



bad:1513=0.37% λ (Å) $z = 1.43135$

1 > +6.0 σ

3 < -6.0 σ