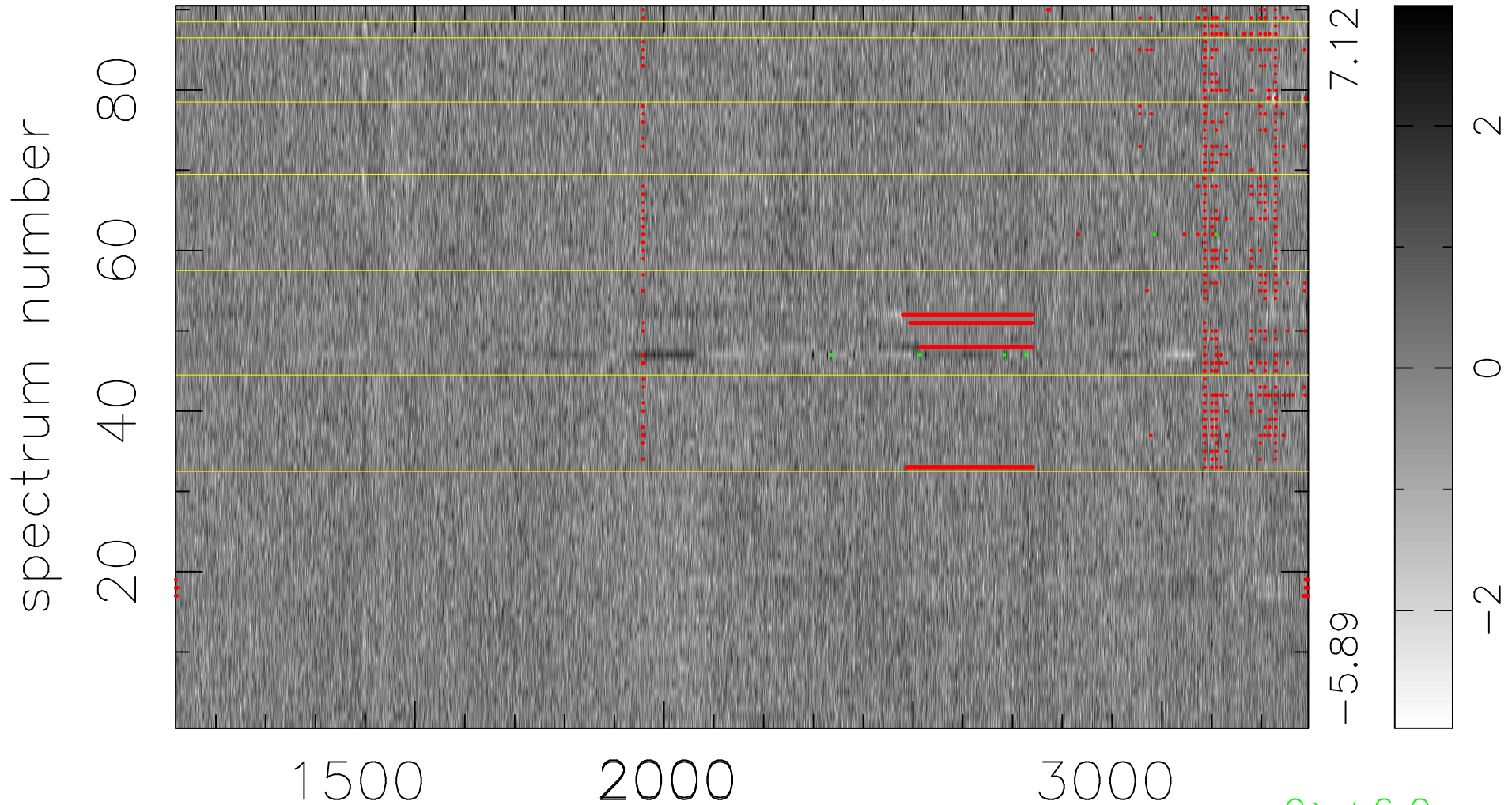


$$\chi(\lambda, t) = (\text{Data} - \text{Model } \text{AC}_5\text{B}_5\text{F}) / \sigma \chi$$

$$\chi^2 / (409500 - 5225) = 0.922 \Rightarrow 1.009$$

4550x90



bad:2632=0.64% λ (Å) $z = 1.85005$