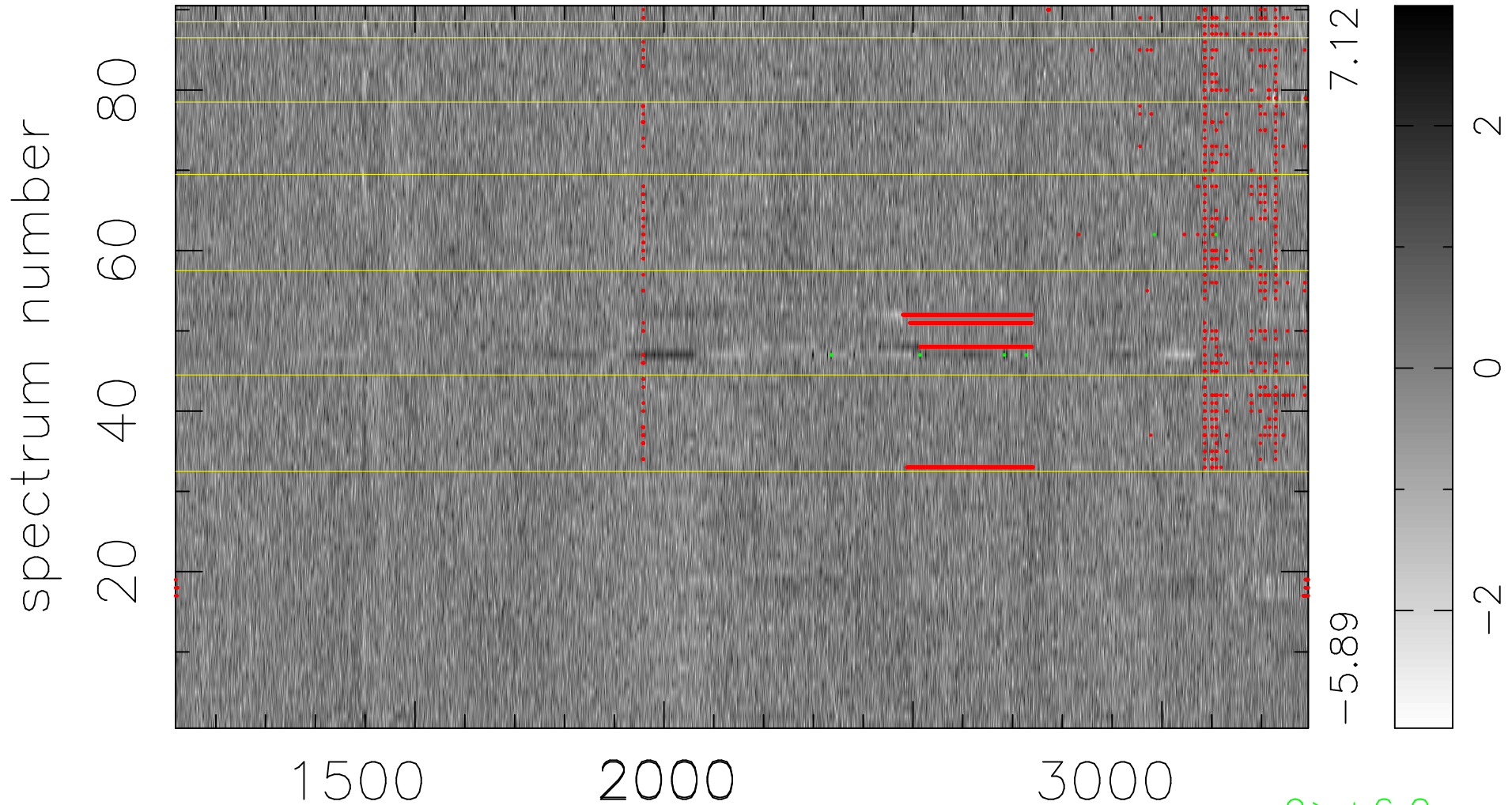


$$\chi(\lambda, t) = ( \text{Data} - \text{Model } \text{AC}_5\text{B}_5\text{F} ) / \sigma \chi$$

$$\chi^2 / (409500 - 5225) = 0.922 \Rightarrow 1.009$$

4550x90



bad:2632=0.64%  $\lambda$  (Å)  $z = 1.85005$

9 > +6.0 $\sigma$