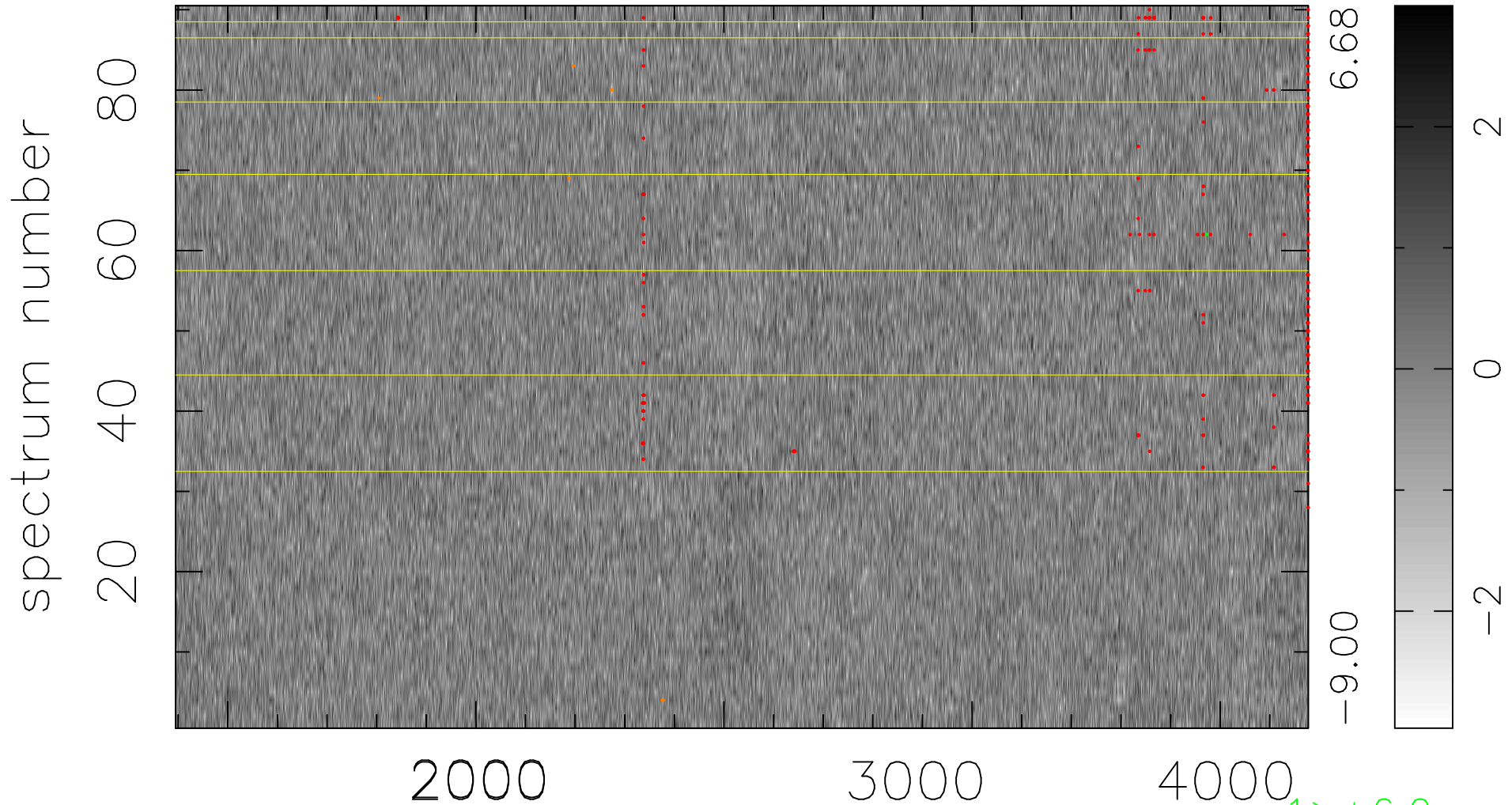


$$\chi(\lambda, t) = ( \text{Data} - \text{Model AC}_5\text{F} ) / \sigma \chi$$

$$\chi^2 / (410940 - 5042) = 0.912 \Rightarrow 1.007$$

4566x90



bad:284=0.069%  $\lambda$  (Å)  $z = 1.39285$

1 > +6.0σ

8 < -6.0σ