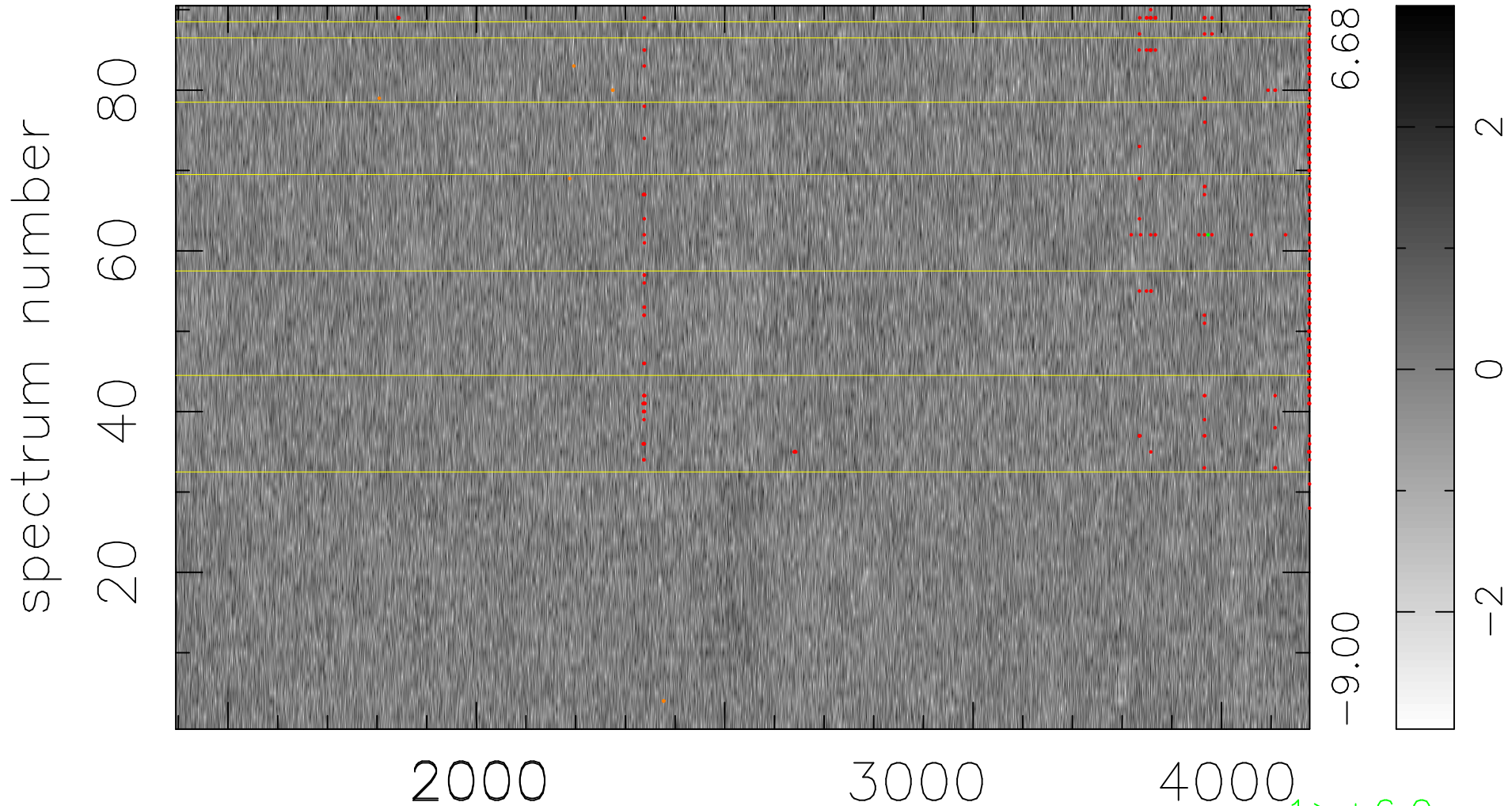


$$\chi(\lambda,t) = (\text{Data} - \text{Model } AC_5) / \sigma \chi$$

$$\chi^2 / (410940 - 4952) = 0.912 \Rightarrow 1.007$$

4566x90



bad:284=0.069% λ (Å) $z = 1.39285$

1 > +6.0σ

8 < -6.0σ