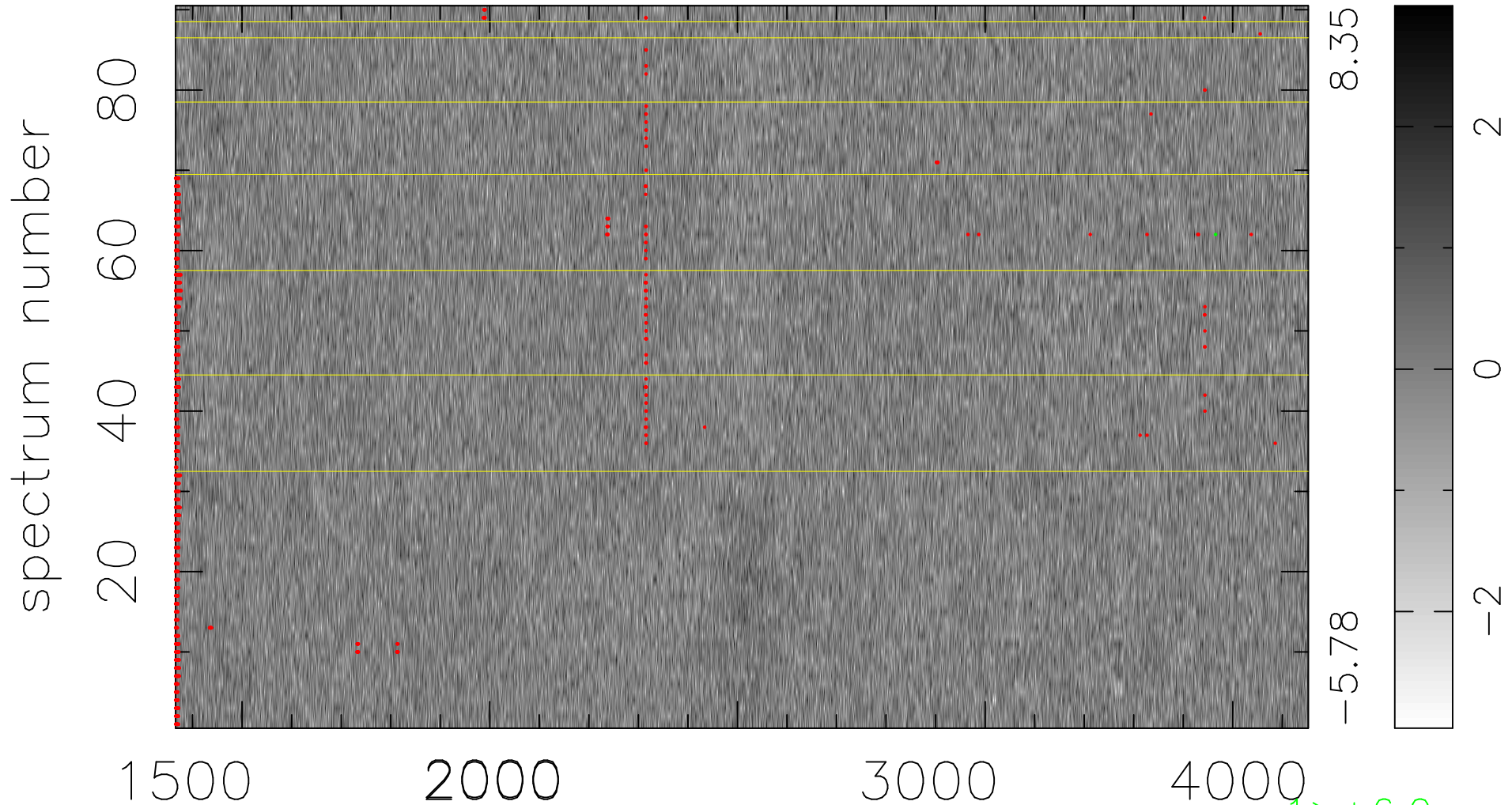


$$\chi(\lambda, t) = ( \text{Data} - \text{Model } \text{AC}_5\text{B}_4\text{F} ) / \sigma \chi$$

$$\chi^2 / (411660 - 5177) = 0.938 \Rightarrow 1.007$$

4574x90



bad:1059=0.26%  $\lambda$  (Å)  $z = 1.41790$