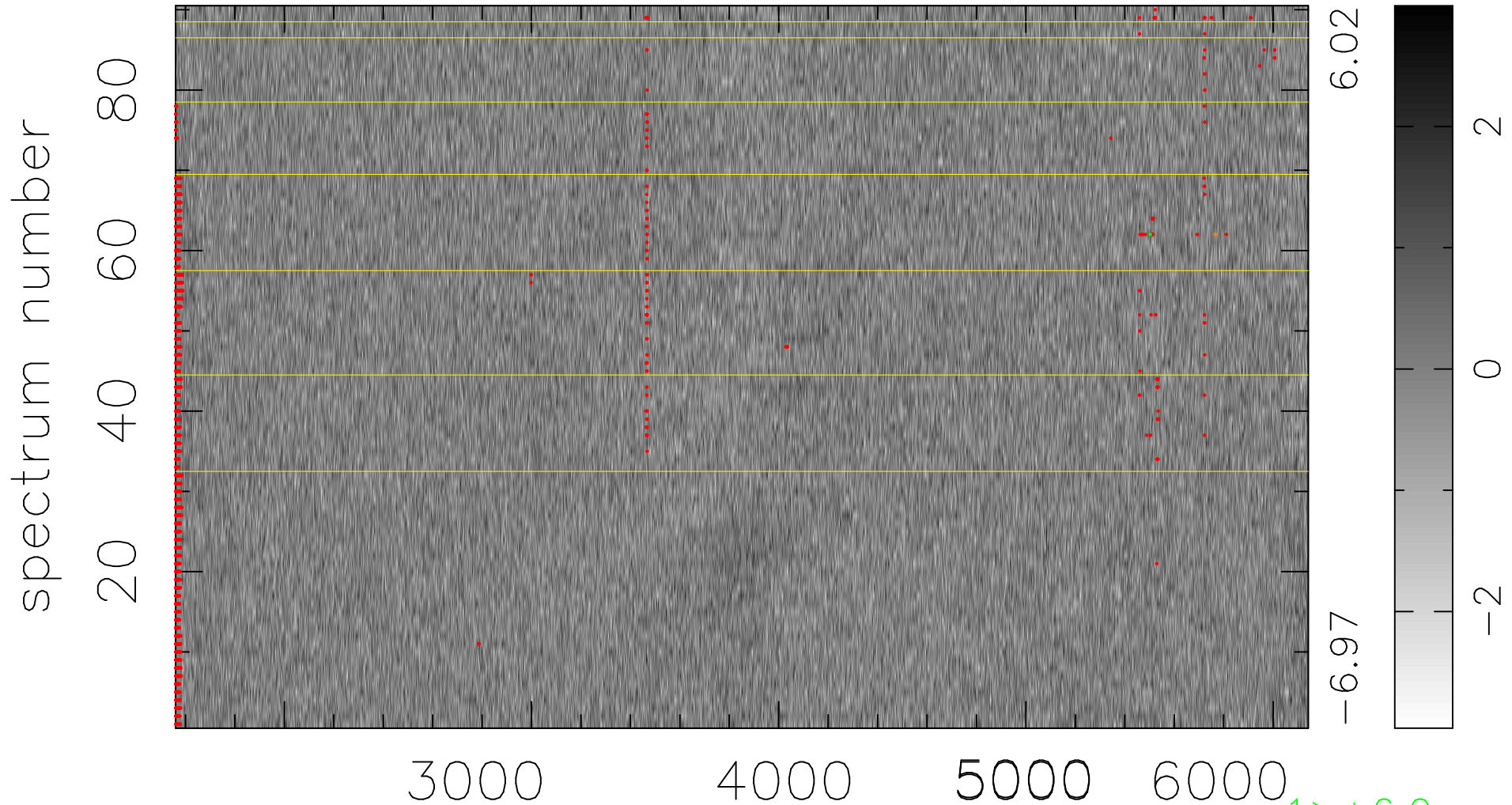


$$\chi(\lambda, t) = (\text{Data} - \text{Model } \text{AC}_5\text{B}_3\text{F}) / \sigma \chi$$

$$\chi^2 / (412470 - 5157) = 0.881 \Rightarrow 1.007$$

4583x90



bad:1570=0.38% λ (Å) $z = 0.58450$

1 > +6.0 σ

1 < -6.0 σ