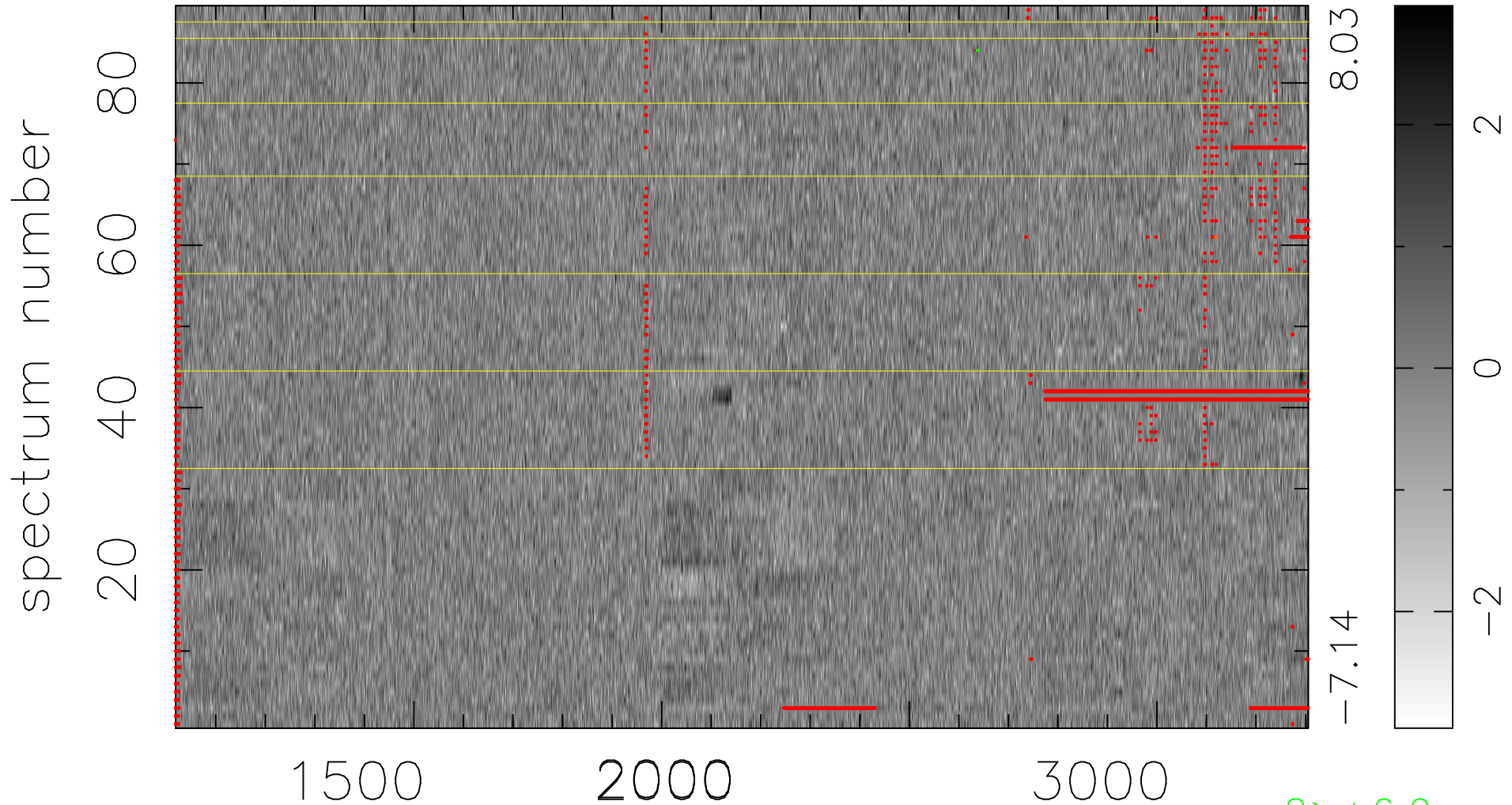


$$\chi(\lambda, t) = (\text{Data} - \text{Model } \text{AC}_5\text{B}_5\text{F}) / \sigma \chi$$

$$\chi^2 / (407086 - 5288) = 0.978 \Rightarrow 1.007$$

4574 × 89



bad:4603=1.1%

λ (Å) $z = 1.83611$

2 > +6.0σ

1 < -6.0σ