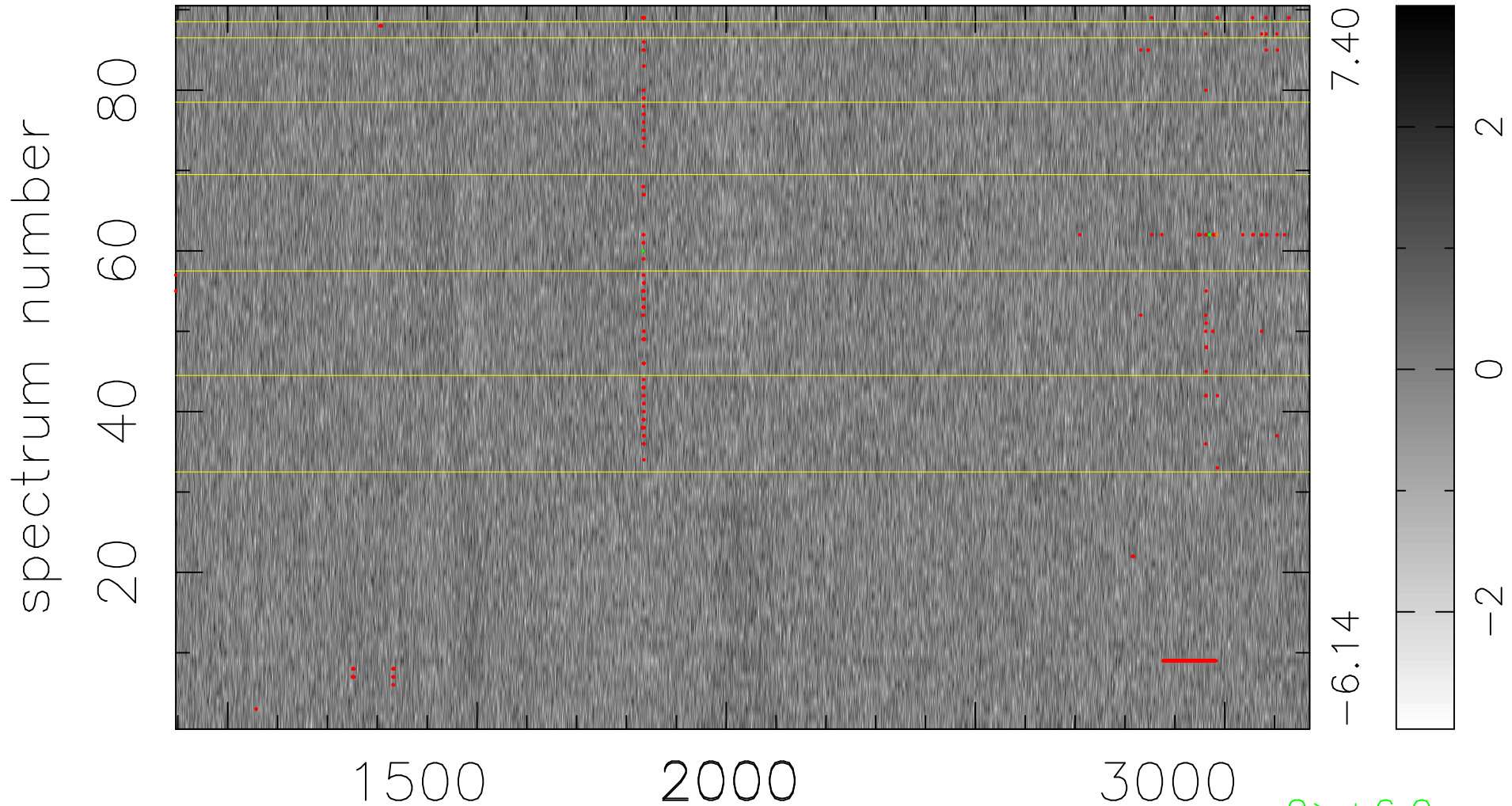


$$\chi(\lambda, t) = (\text{Data} - \text{Model } \text{AC}_5\text{B}_7\text{F}) / \sigma \chi$$

$$\chi^2 / (409500 - 5476) = 0.930 \Rightarrow 1.008$$

4550x90



bad:398=0.097% λ (Å) $z = 2.01734$

2 > +6.0 σ

1 < -6.0 σ