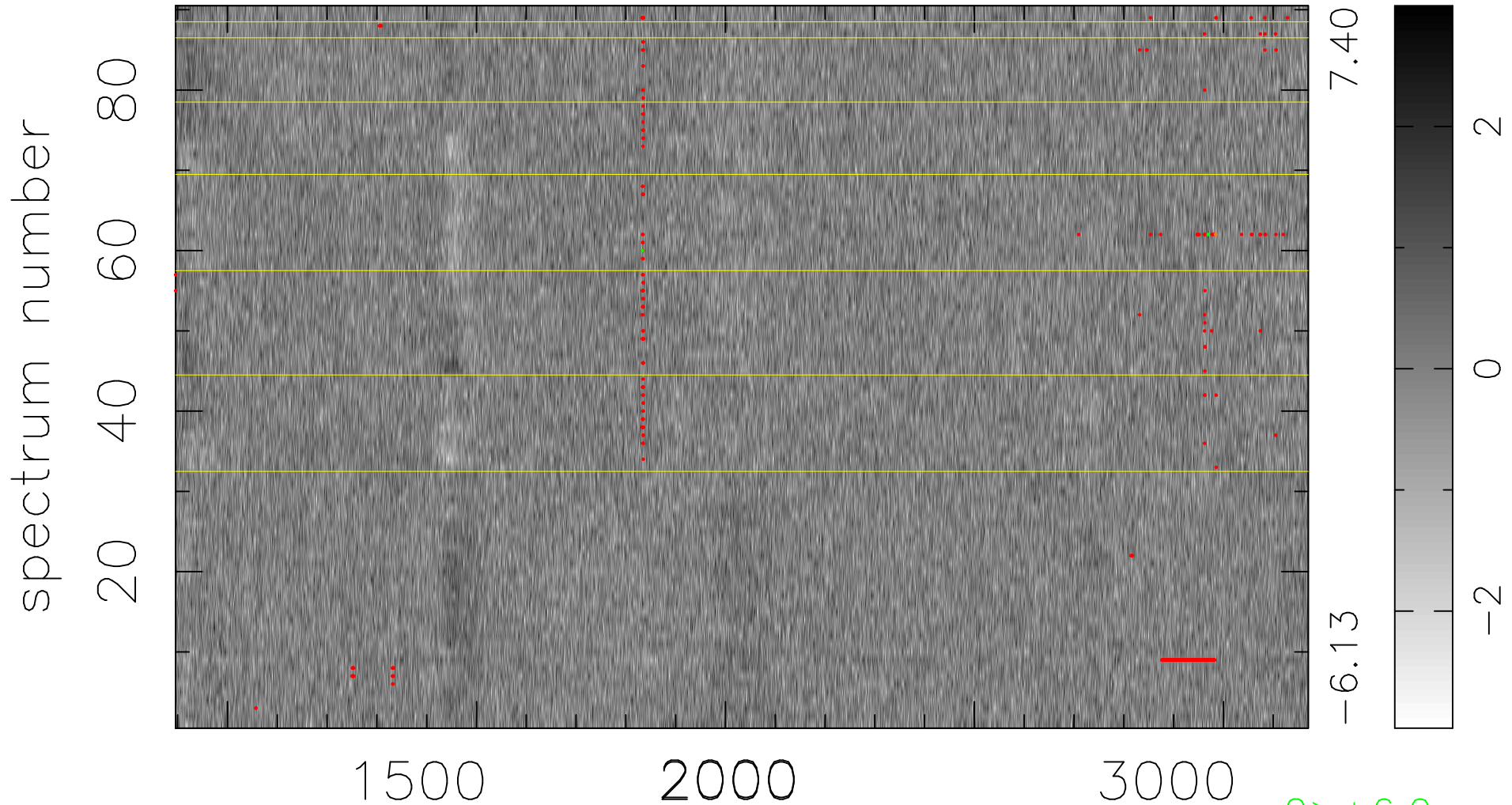


$$\chi(\lambda, t) = ( \text{Data} - \text{Model AC}_5\text{F} ) / \sigma \chi$$

$$\chi^2 / (409500 - 5317) = 0.940 \Rightarrow 1.007$$

4550x90



bad:398=0.097%  $\lambda$  (Å)  $z = 2.01734$

2 > +6.0σ  
1 < -6.0σ