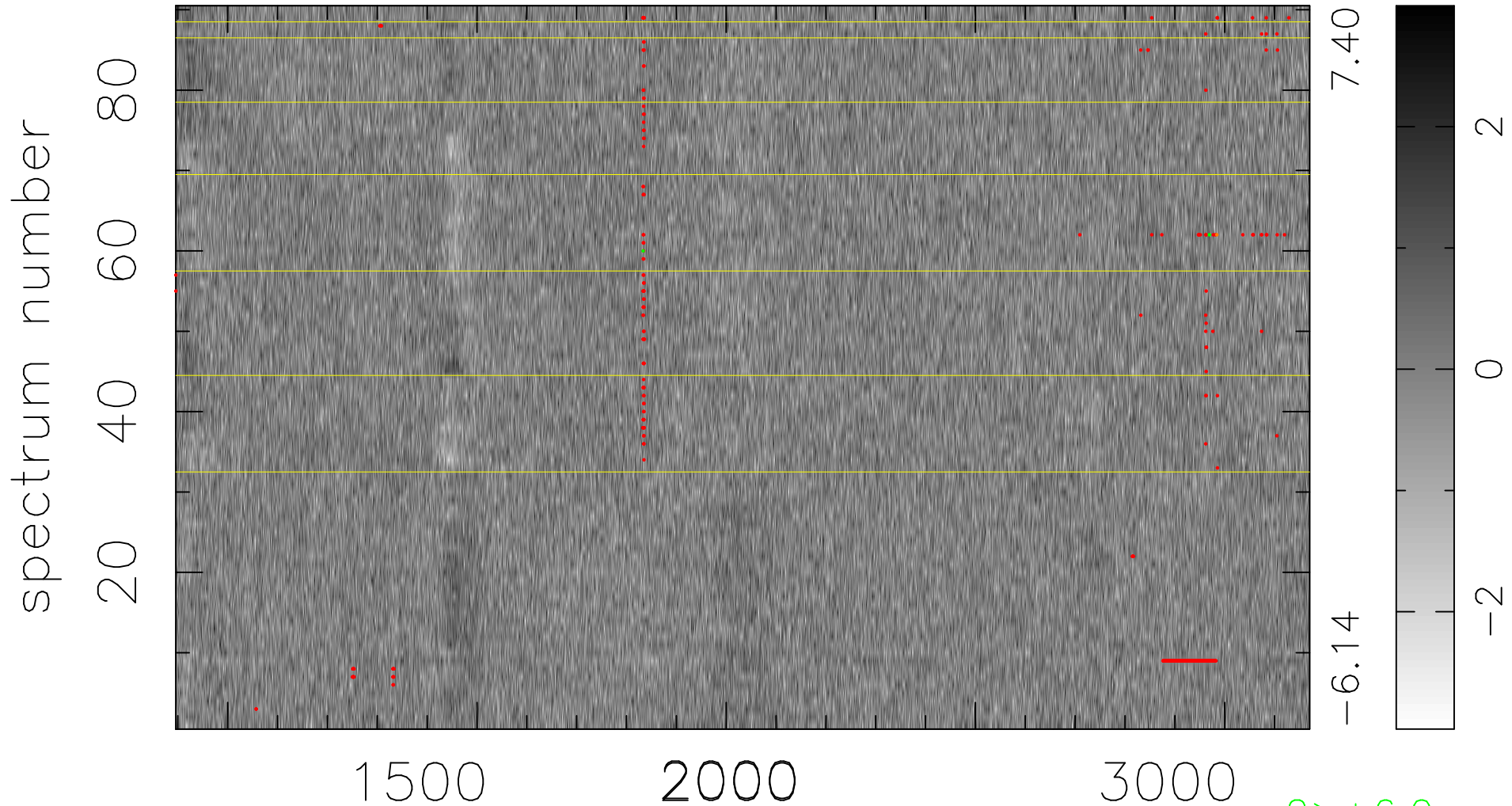


$$\chi(\lambda, t) = (\text{Data} - \text{Model } AC_5) / \sigma \chi$$

$$\chi^2 / (409500 - 5227) = 0.940 \Rightarrow 1.007$$

4550x90



bad:398=0.097% λ (Å) $z = 2.01734$

2 > +6.0σ

1 < -6.0σ