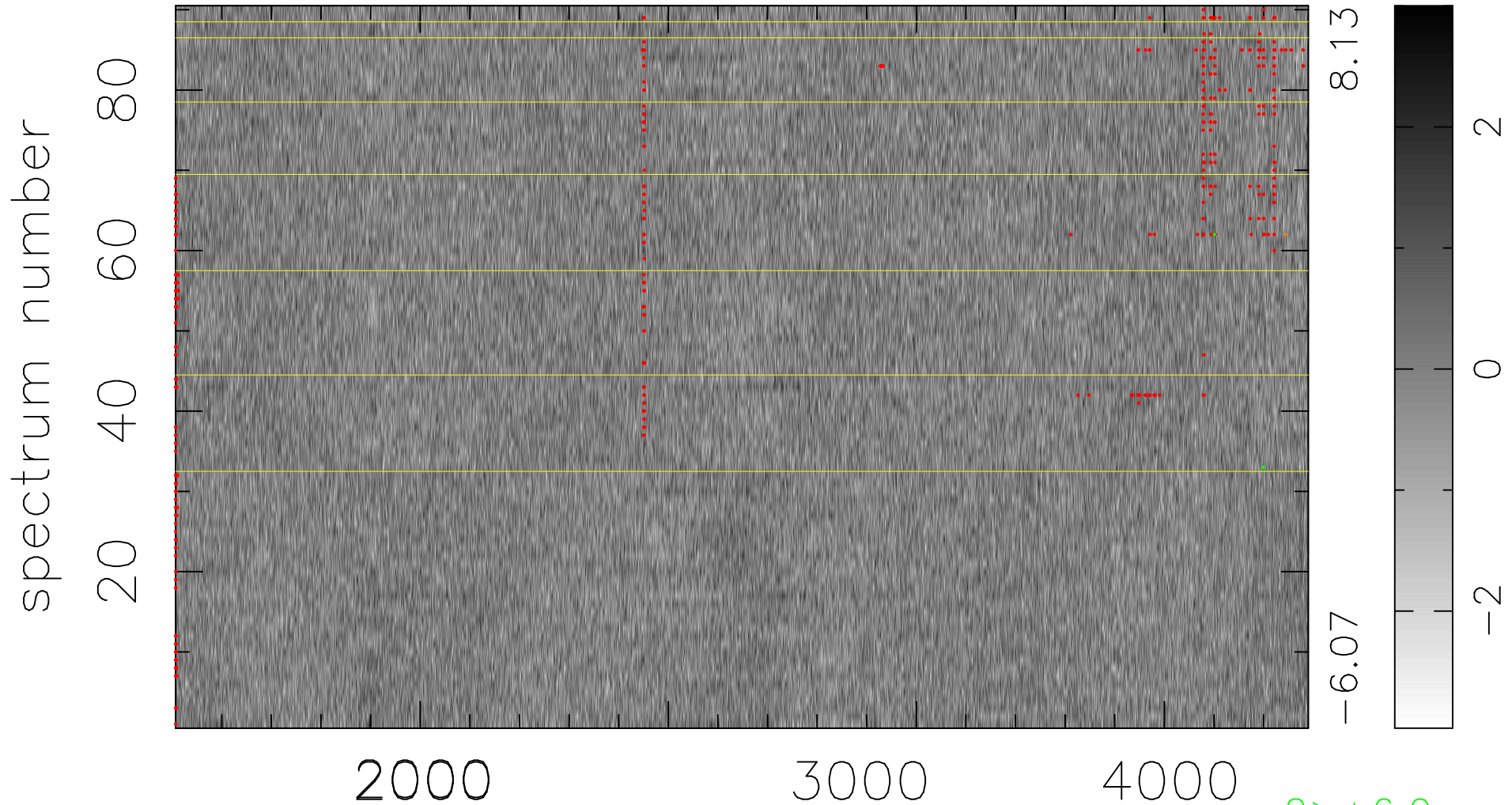


$$\chi(\lambda, t) = (\text{Data} - \text{Model AC}_5\text{F}) / \sigma \chi$$

$$\chi^2 / (411030 - 4962) = 0.913 \Rightarrow 1.007$$

4567 × 90



8.13

-6.07

2

0

-2

2 > +6.0σ

1 < -6.0σ

bad:447=0.11%

λ (Å) z = 1.27147