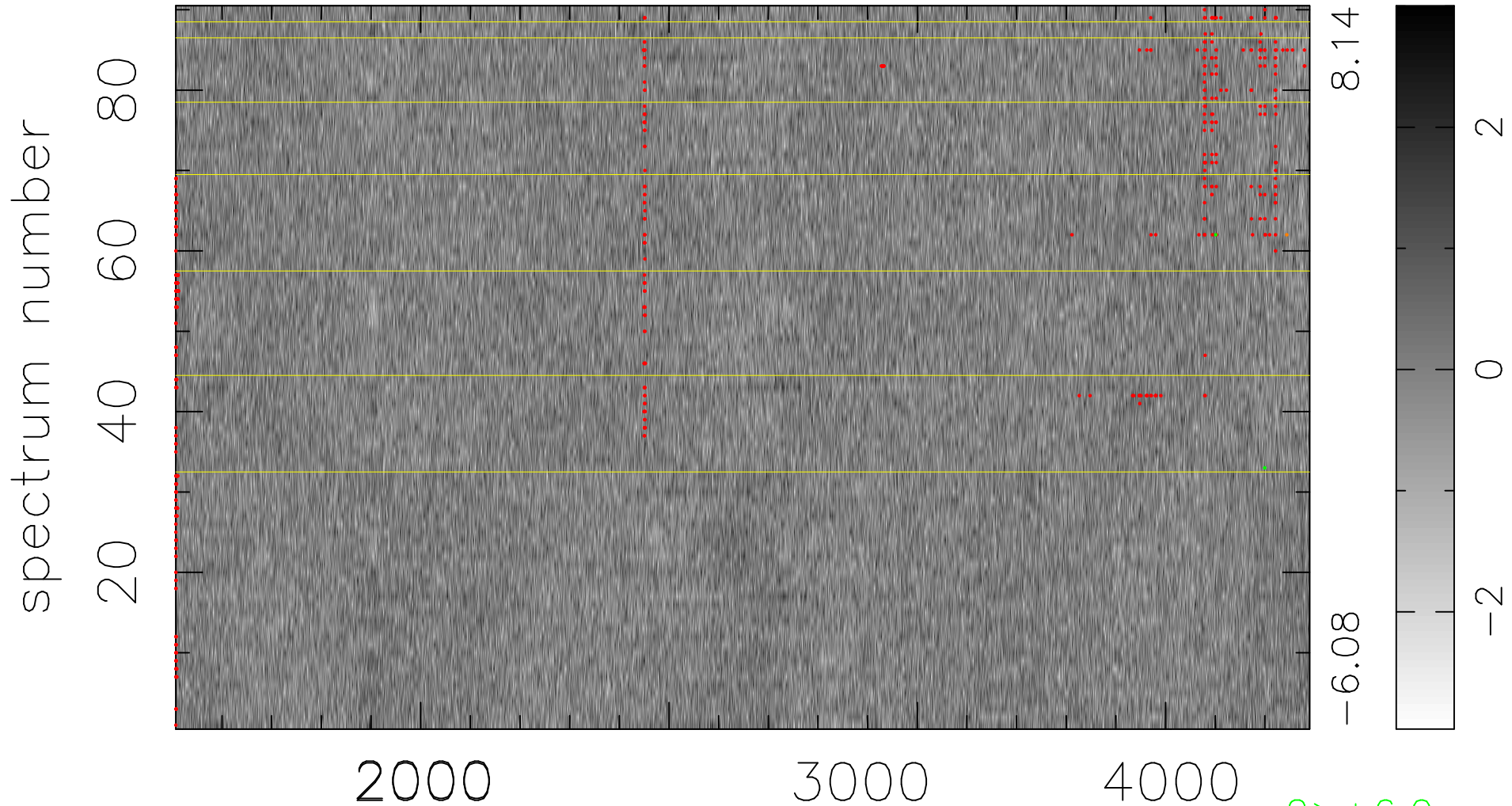


$$\chi(\lambda,t) = ( \text{Data} - \text{Model } AC_5 ) / \sigma \chi$$

$$\chi^2 / (411030 - 4872) = 0.913 \Rightarrow 1.008$$

4567 × 90



bad:447=0.11%

$\lambda$  (Å)  $z = 1.27147$

2 > +6.0σ

1 < -6.0σ