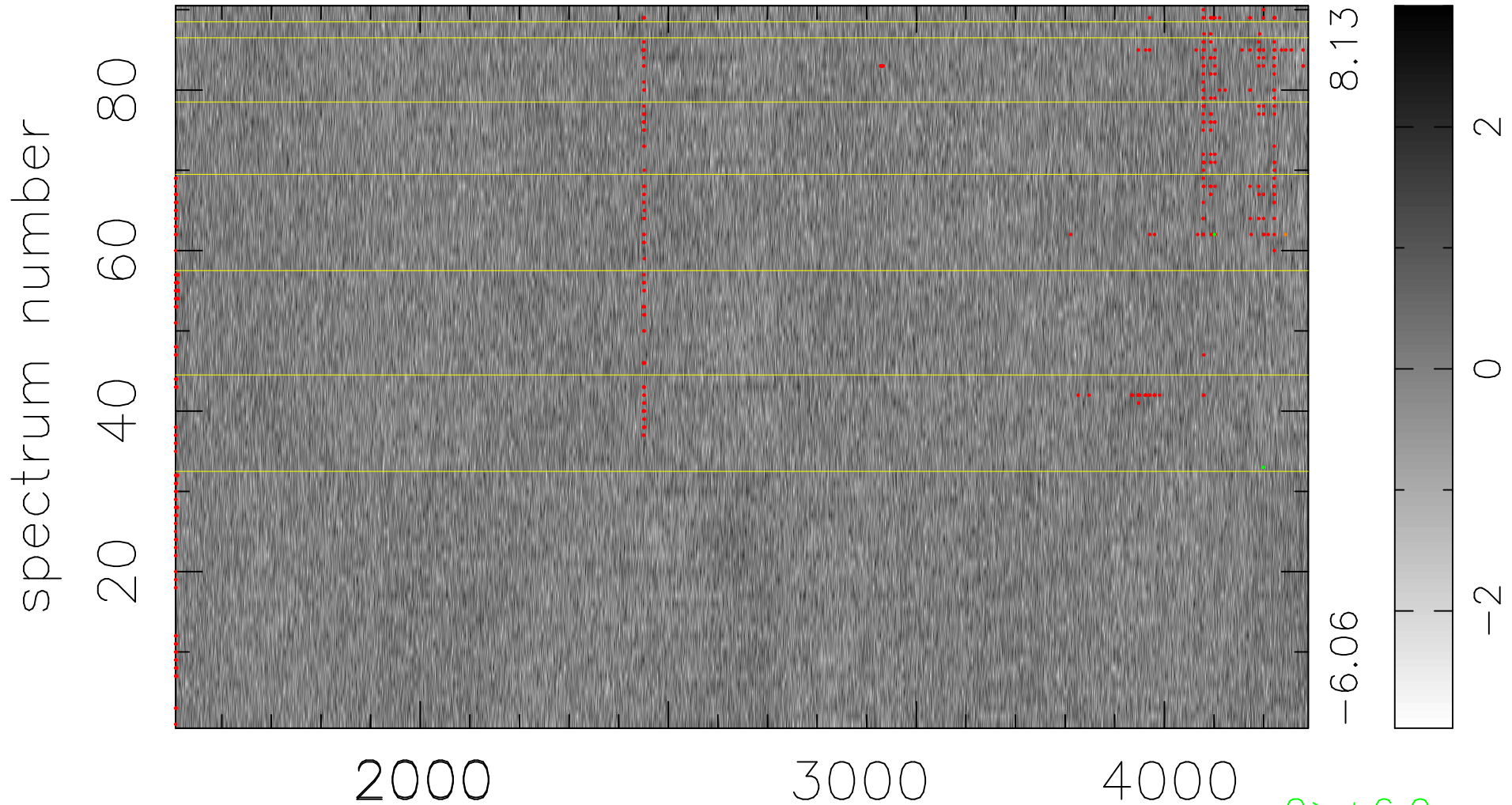


$$\chi(\lambda, t) = ( \text{Data} - \text{Model } \text{AC}_5\text{B}_3\text{F} ) / \sigma \chi$$

$$\chi^2 / (411030 - 5116) = 0.910 \Rightarrow 1.008$$

4567x90



bad:447=0.11%

$\lambda$  (Å)  $z = 1.27147$

2 > +6.0 $\sigma$

1 < -6.0 $\sigma$