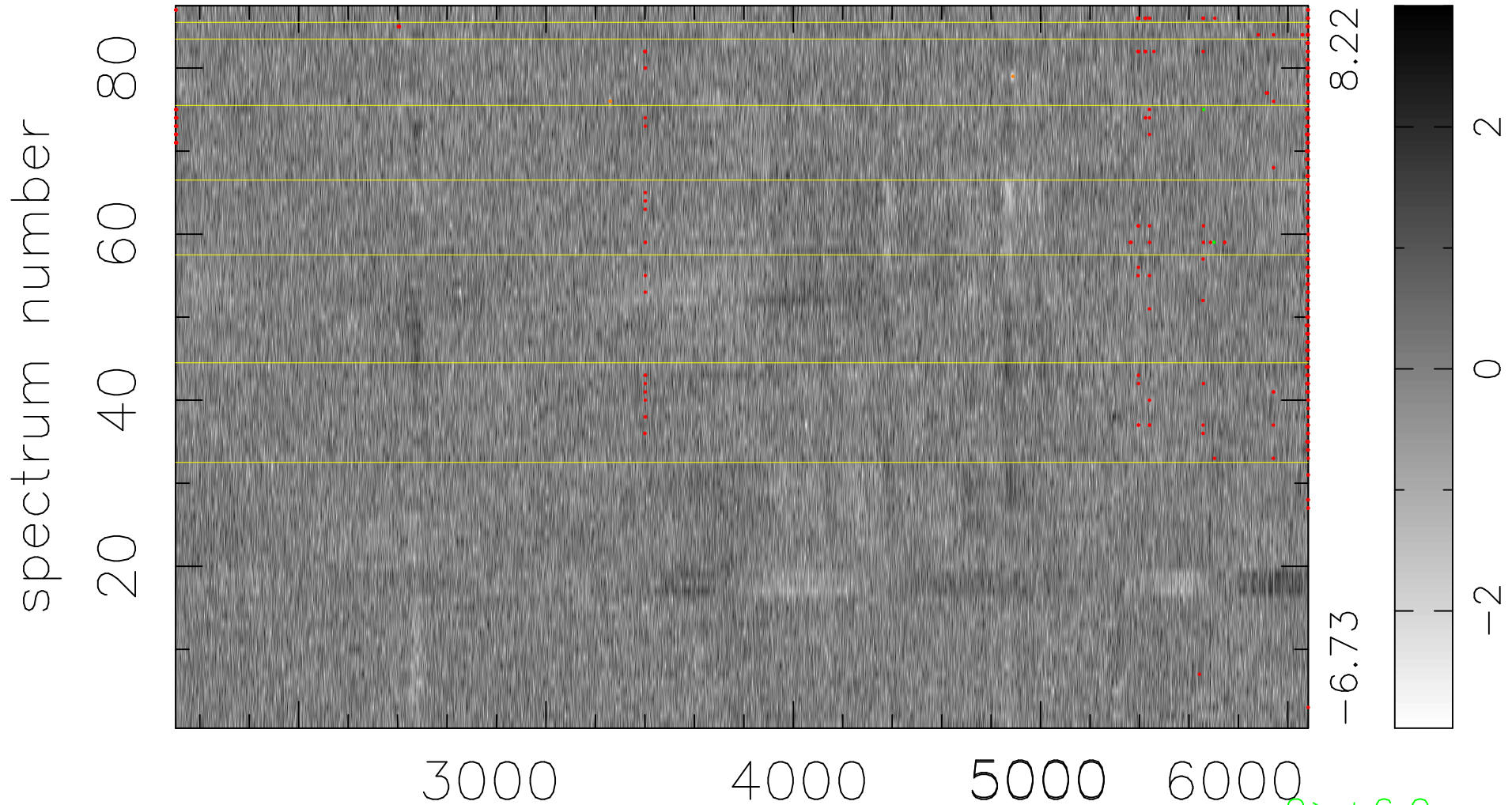


$$\chi(\lambda, t) = (\text{Data} - \text{Model } AC_5) / \sigma \chi$$

$$\chi^2 / (398547 - 4868) = 0.929 \Rightarrow 1.008$$

4581 × 87



8.22

-6.73

2

0

-2

2 > +6.0σ

3 < -6.0σ

bad:390=0.098% λ (Å) z = 0.60831