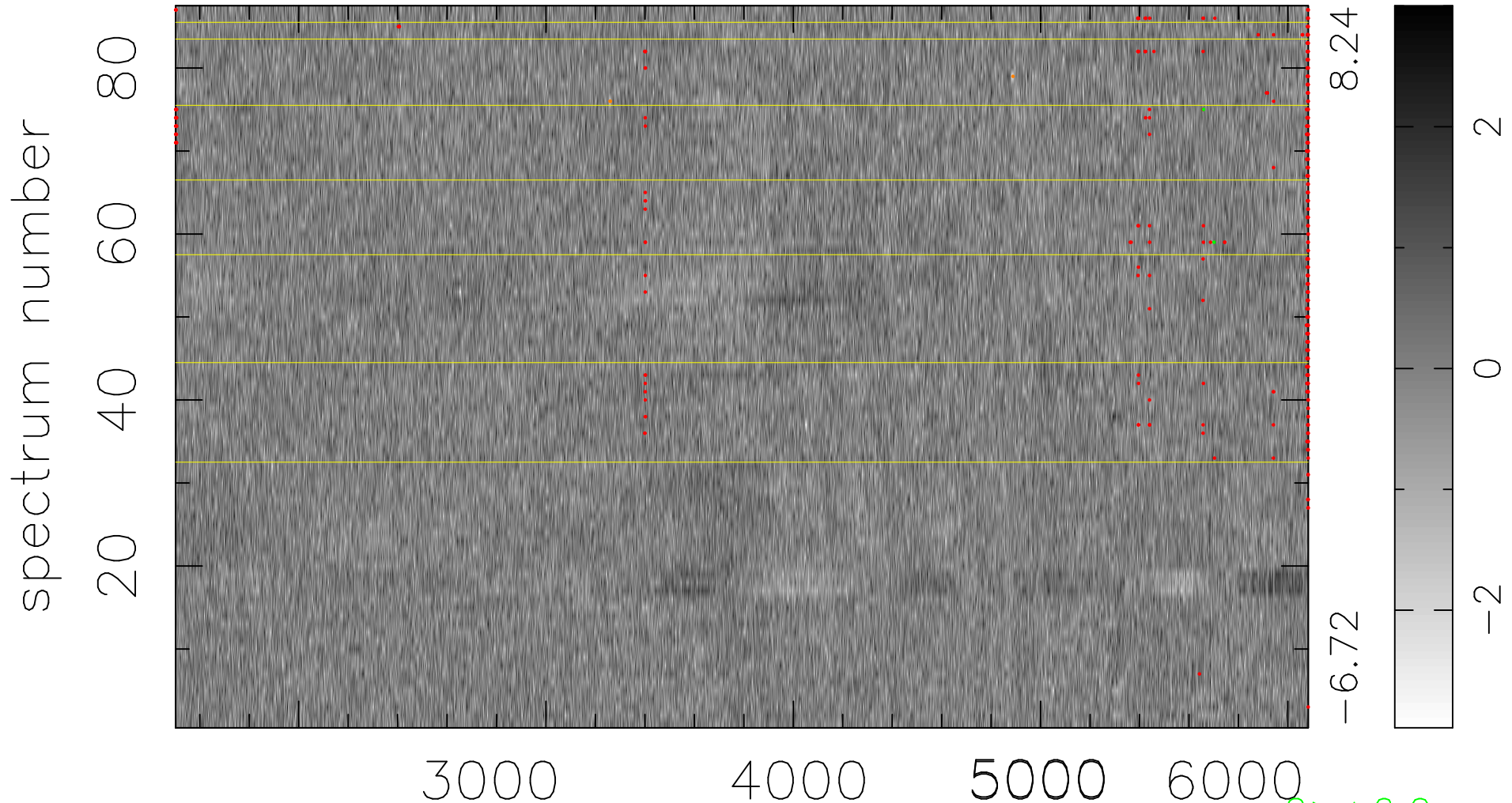


$$\chi(\lambda, t) = (\text{Data} - \text{Model } \text{AC}_5\text{B}_3\text{F}) / \sigma \chi$$

$$\chi^2 / (398547 - 5104) = 0.921 \Rightarrow 1.009$$

4581 × 87



bad:390=0.098% λ (Å) $z = 0.60831$

2 > +6.0σ

3 < -6.0σ