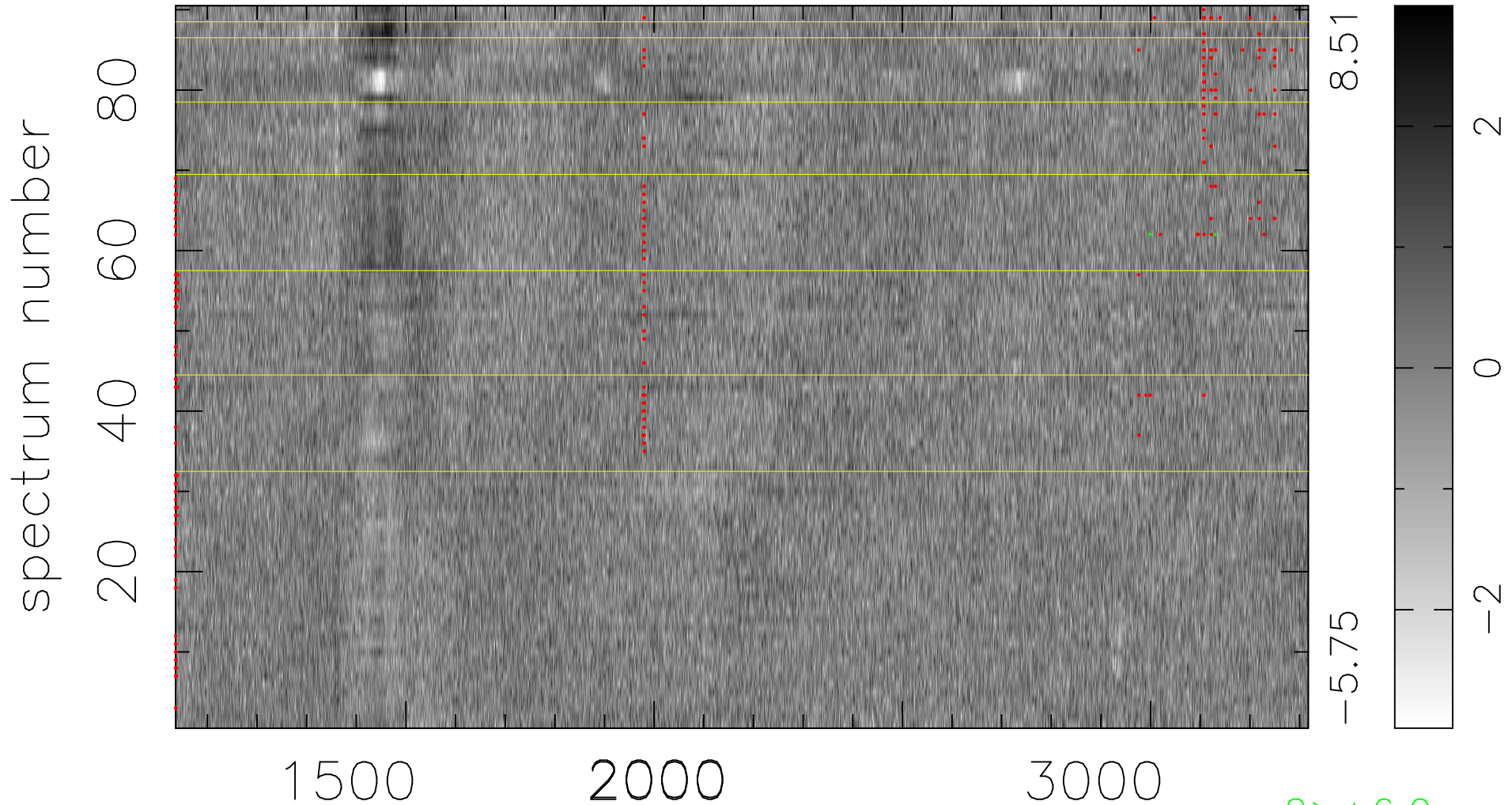


$$\chi(\lambda, t) = (\text{Data} - \text{Model AC}_5\text{F}) / \sigma \chi$$

$$\chi^2 / (410760 - 5139) = 0.937 \Rightarrow 1.009$$

4564x90



bad:297=0.072% λ (Å) $z = 1.82215$

2 > +6.0 σ