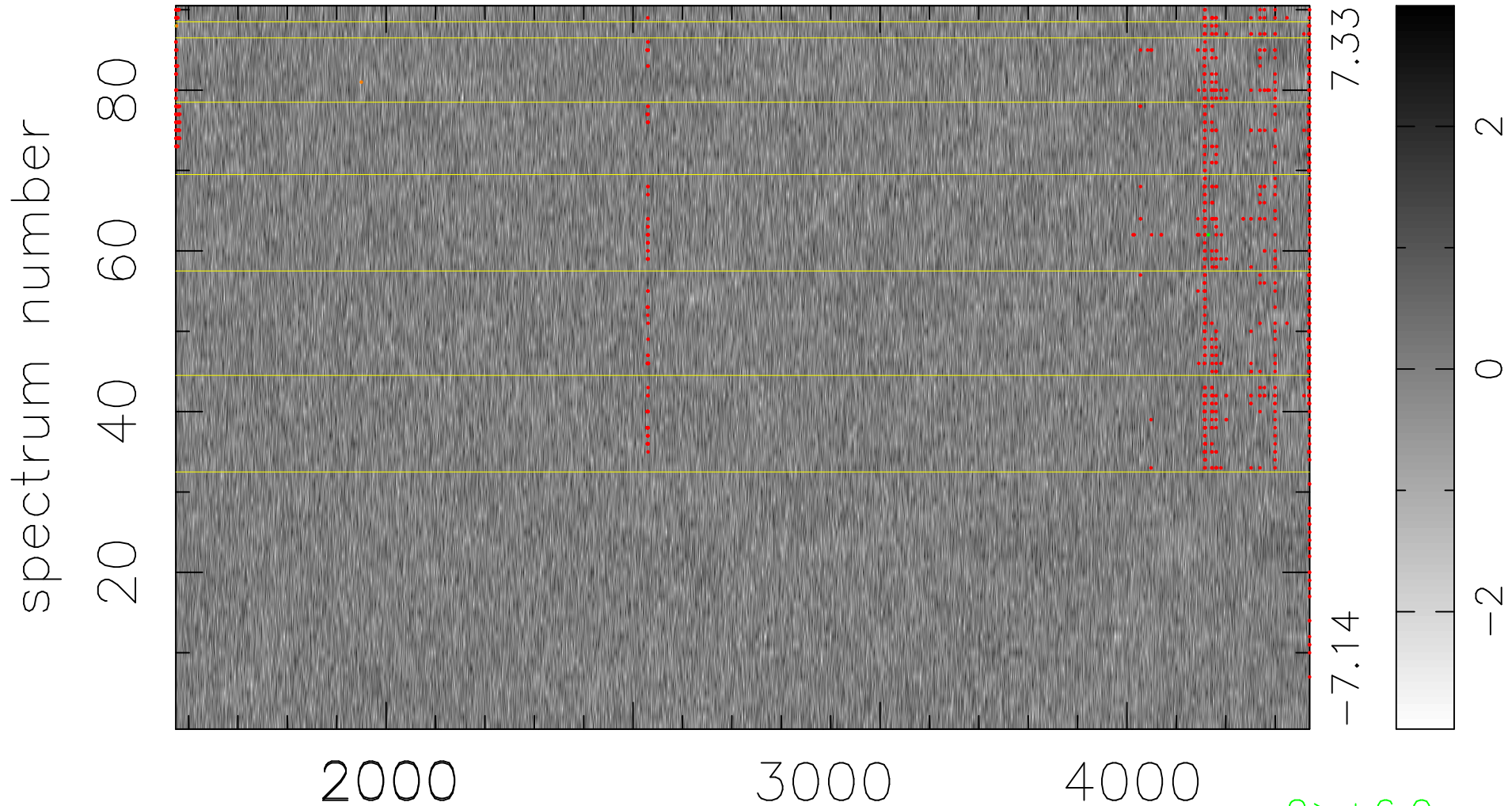


$$\chi(\lambda, t) = (\text{Data} - \text{Model } \text{AC}_5\text{B}_4\text{F}) / \sigma \chi$$

$$\chi^2 / (413280 - 5194) = 0.900 \Rightarrow 1.007$$

4592x90



bad:893=0.22%

λ (Å) $z = 1.19057$

2 > +6.0σ

2 < -6.0σ