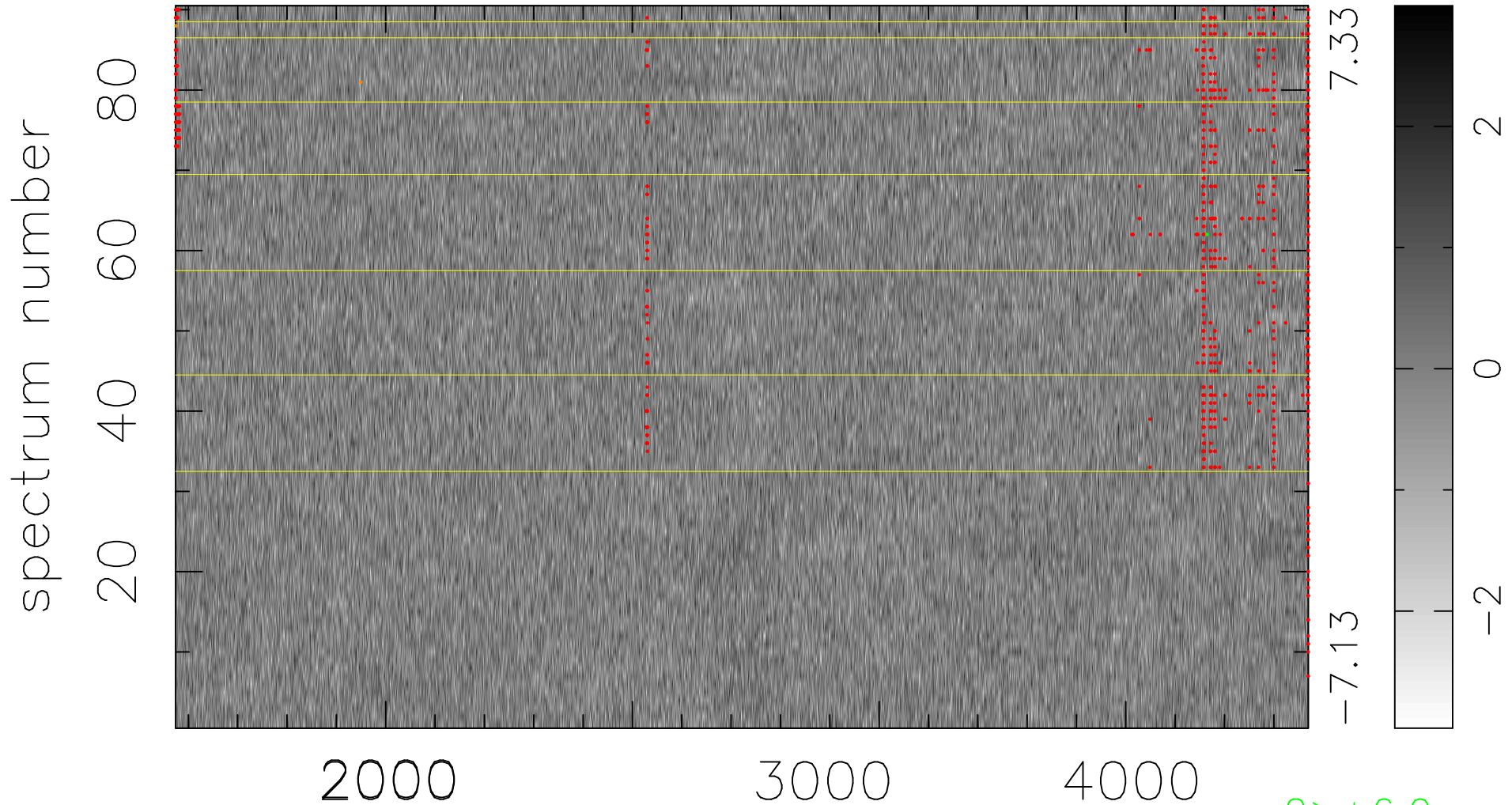


$$\chi(\lambda, t) = (\text{Data} - \text{Model AC}_5\text{F}) / \sigma \chi$$

$$\chi^2 / (413280 - 5058) = 0.902 \Rightarrow 1.007$$

4592x90



7.33

-7.13

2

0

-2

2 > +6.0σ

2 < -6.0σ

bad:893=0.22%

λ (Å) z = 1.19057