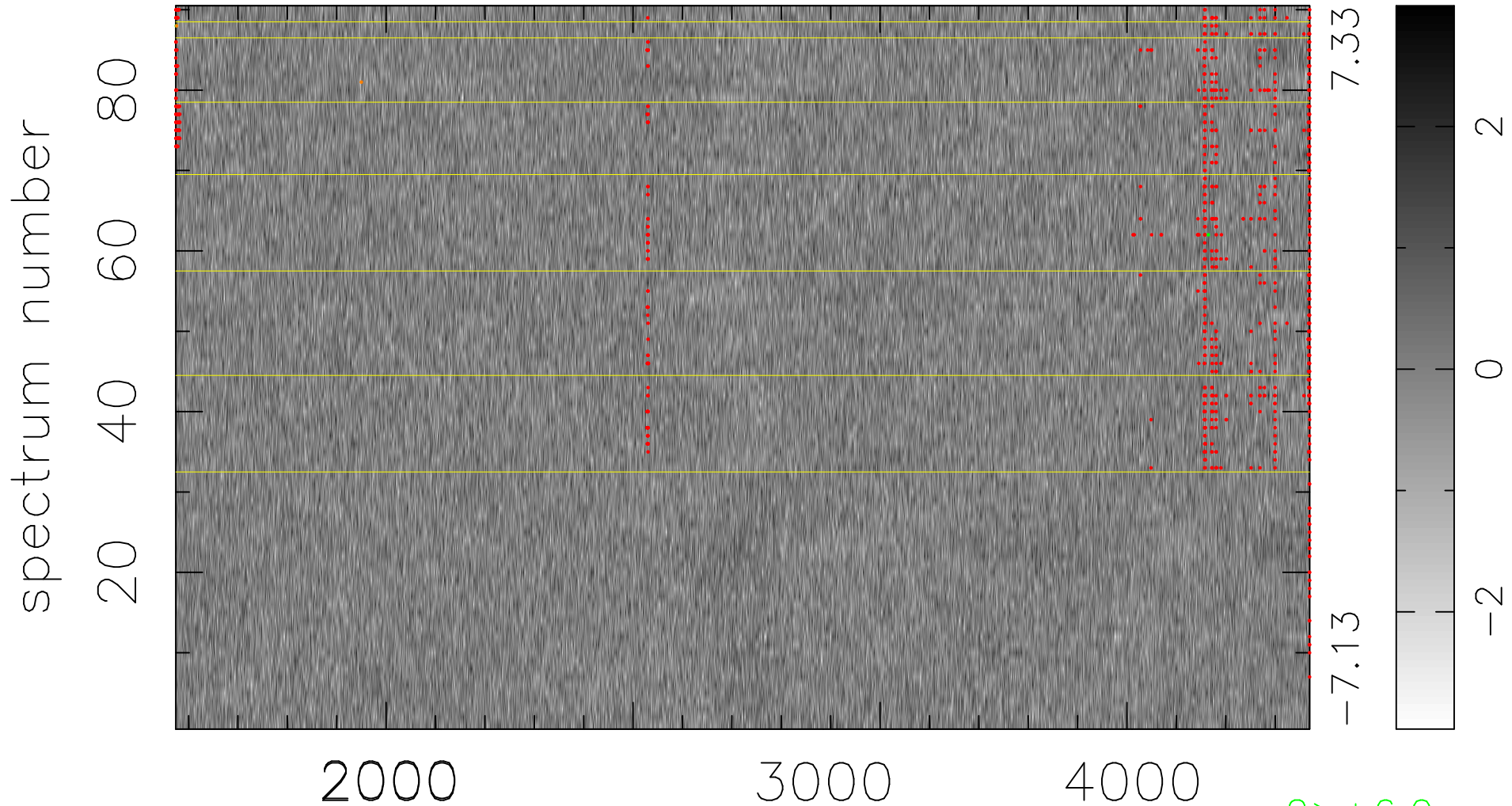


$$\chi(\lambda, t) = (\text{Data} - \text{Model } AC_5) / \sigma \chi$$

$$\chi^2 / (413280 - 4968) = 0.901 \Rightarrow 1.007$$

4592x90



7.33
-7.13

2
0
-2

bad:893=0.22%

λ (Å) $z = 1.19057$

$2 > +6.0\sigma$

$2 < -6.0\sigma$