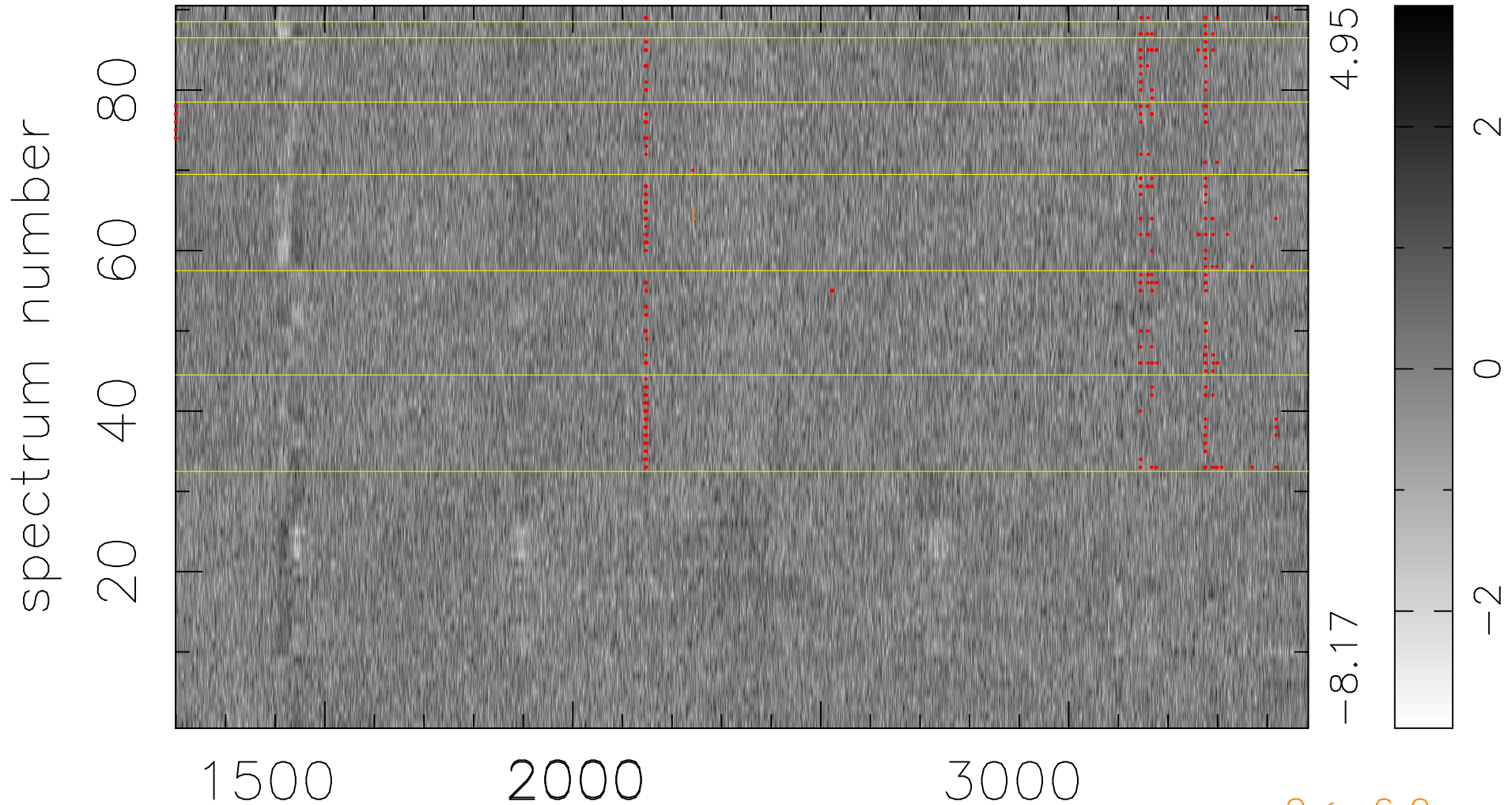


$$\chi(\lambda, t) = ( \text{Data} - \text{Model AC}_5\text{F} ) / \sigma \chi$$

$$\chi^2 / (411120 - 5142) = 0.987 \Rightarrow 1.007$$

4568x90



bad:424=0.10%

$\lambda$  (Å)  $z = 1.61180$

$2 < -6.0\sigma$