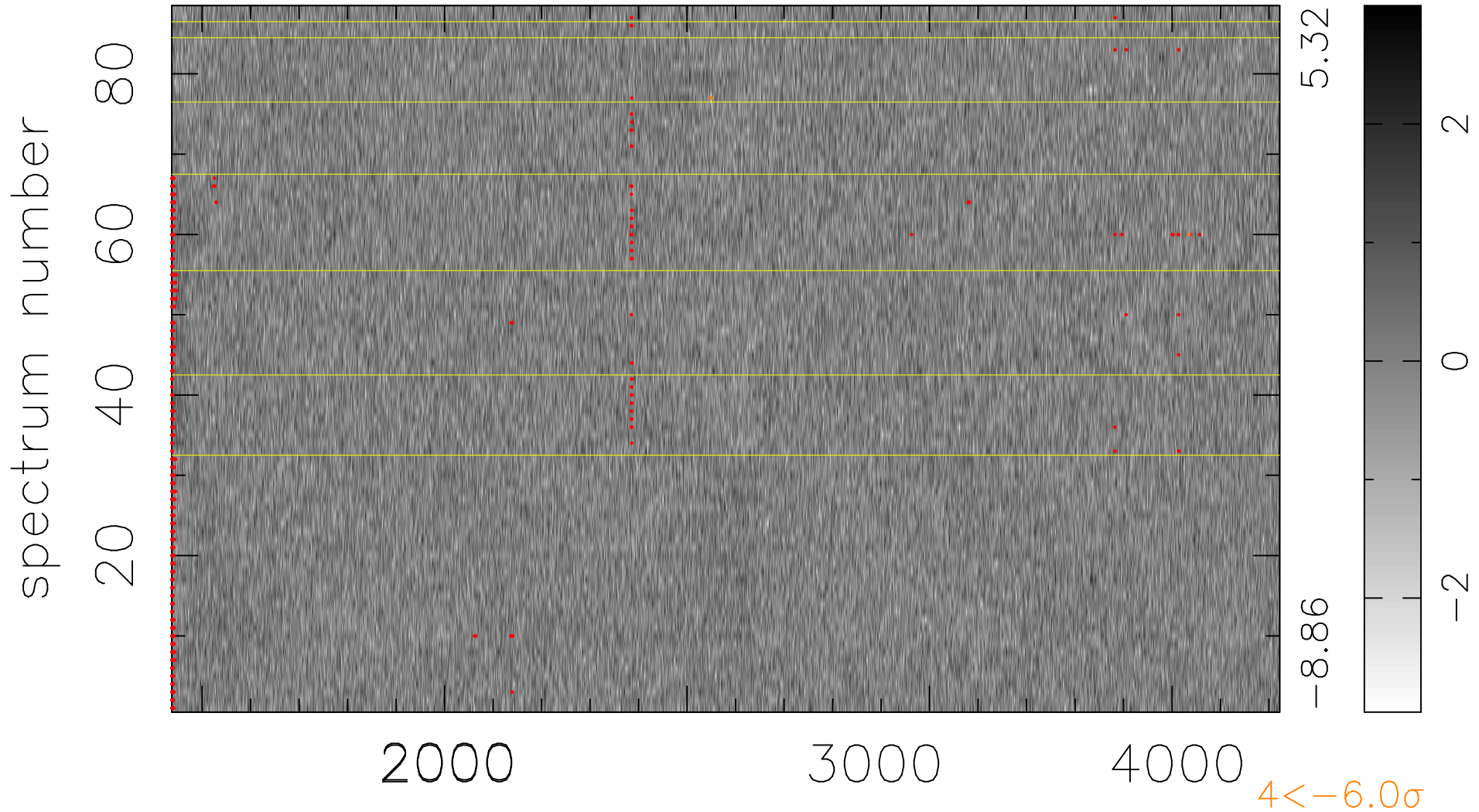


$$\chi(\lambda, t) = (\text{Data} - \text{Model } \text{AC}_5\text{B}_4\text{F}) / \sigma \chi$$

$$\chi^2 / (402160 - 5211) = 0.913 \Rightarrow 1.007$$

4570x88



bad:763=0.19% λ (Å) $z = 1.34102$