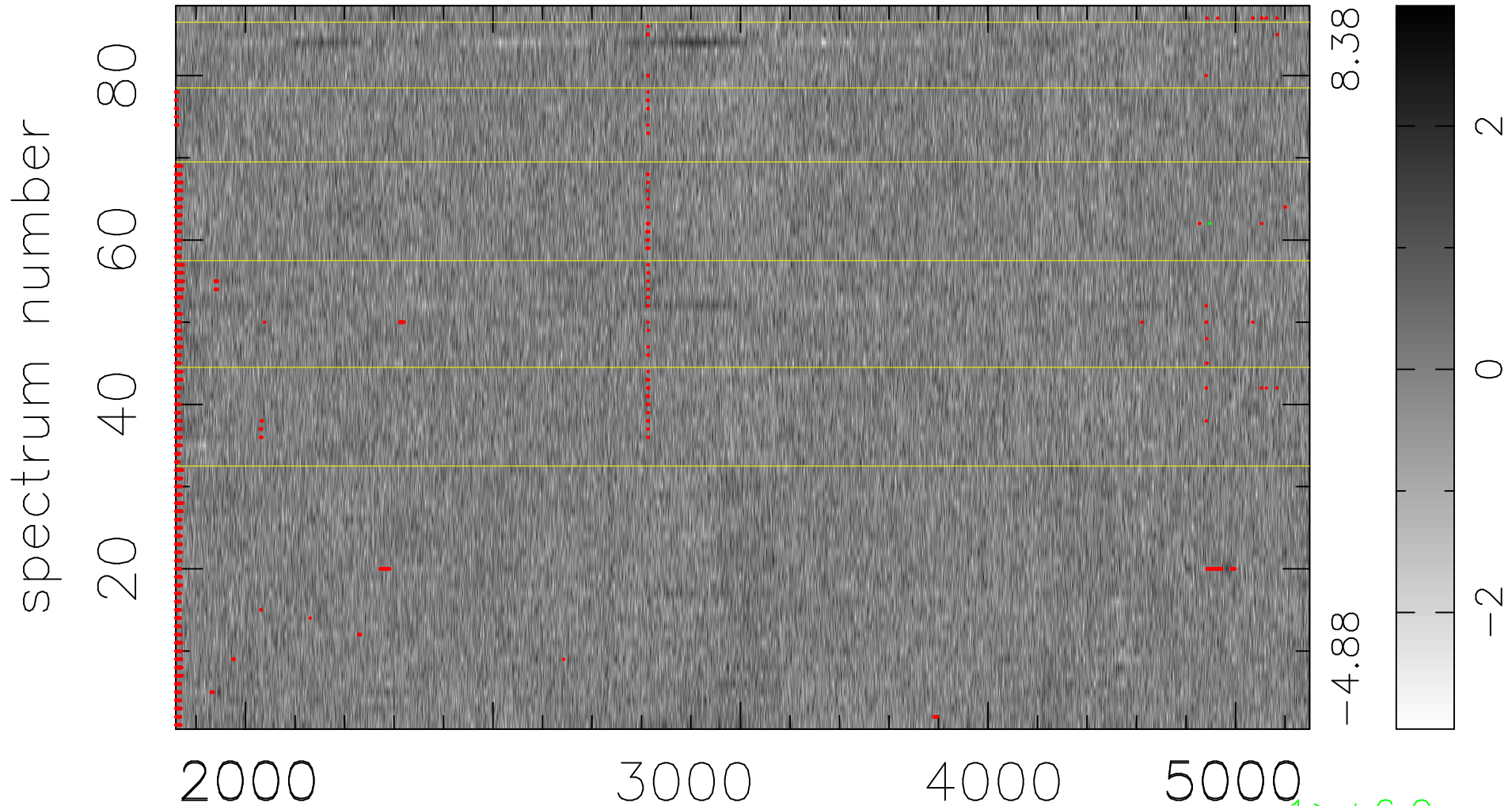


$$\chi(\lambda, t) = (\text{Data} - \text{Model } \text{AC}_5\text{B}_4\text{F}) / \sigma \chi$$

$$\chi^2 / (403216 - 5208) = 0.932 \Rightarrow 1.006$$

4582x88



bad:1877=0.47% λ (Å) $z = 0.92248$