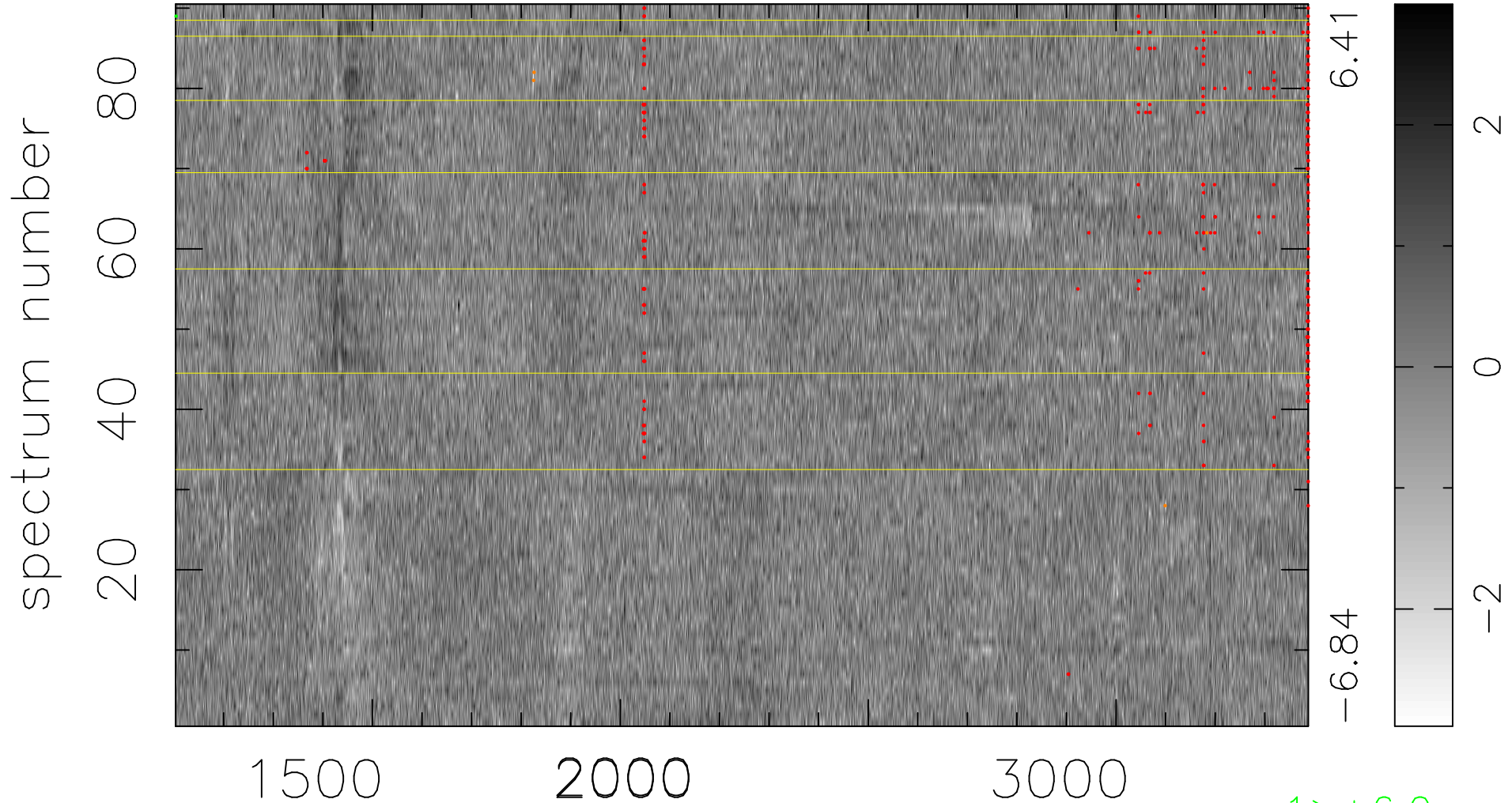


$$\chi(\lambda, t) = (\text{Data} - \text{Model AC}_5\text{F}) / \sigma \chi$$

$$\chi^2 / (411300 - 5144) = 0.942 \Rightarrow 1.007$$

4570x90



bad:368=0.089% λ (Å) $z = 1.73450$

1 > +6.0σ

4 < -6.0σ