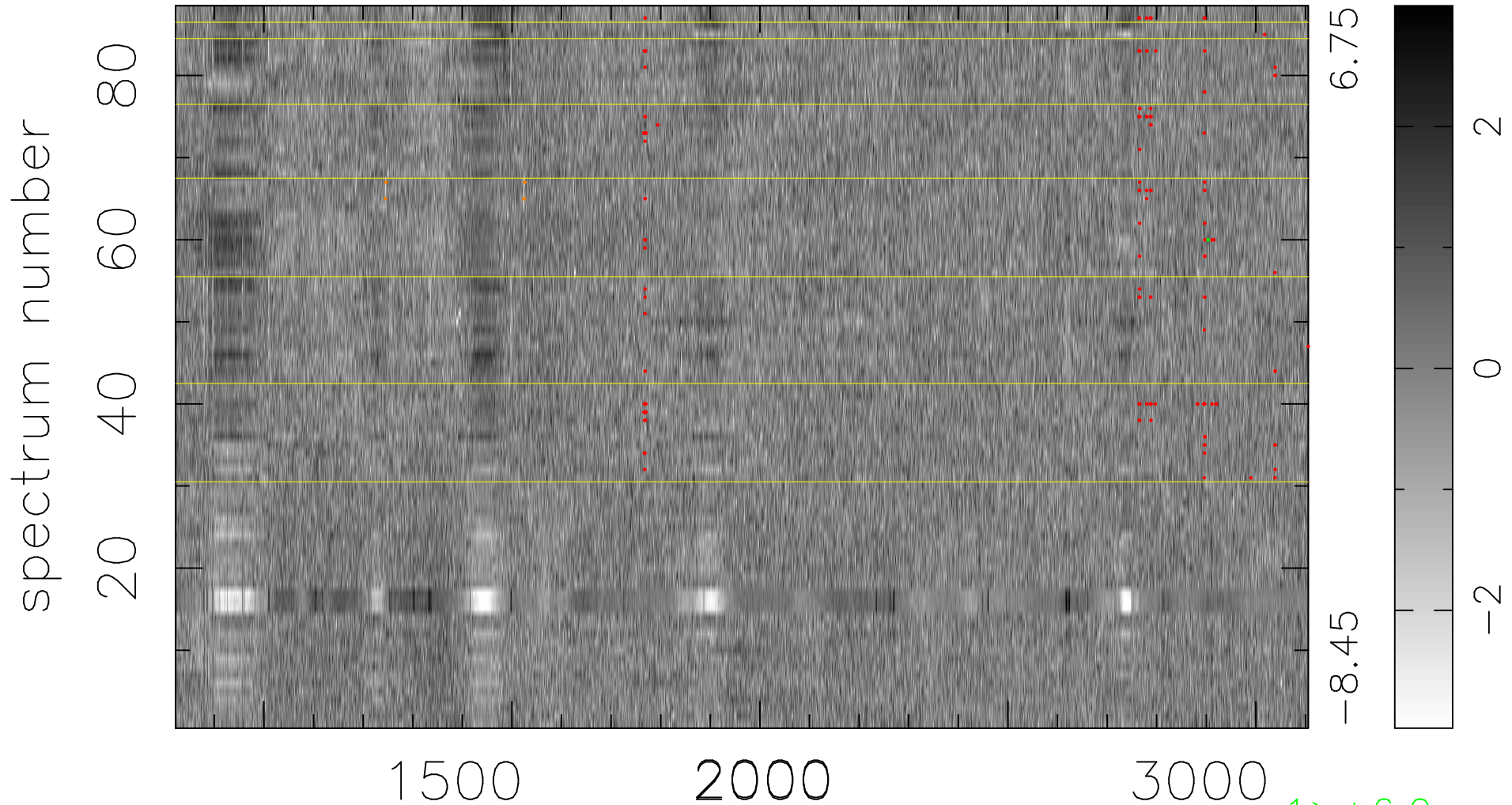


$$\chi(\lambda, t) = (\text{Data} - \text{Model AC}_5\text{F}) / \sigma \chi$$

$$\chi^2 / (401984 - 5316) = 1.888 \Rightarrow 1.008$$

4568x88



bad:167=0.042% λ (Å) $z = 2.11021$

1 > +6.0σ
5 < -6.0σ