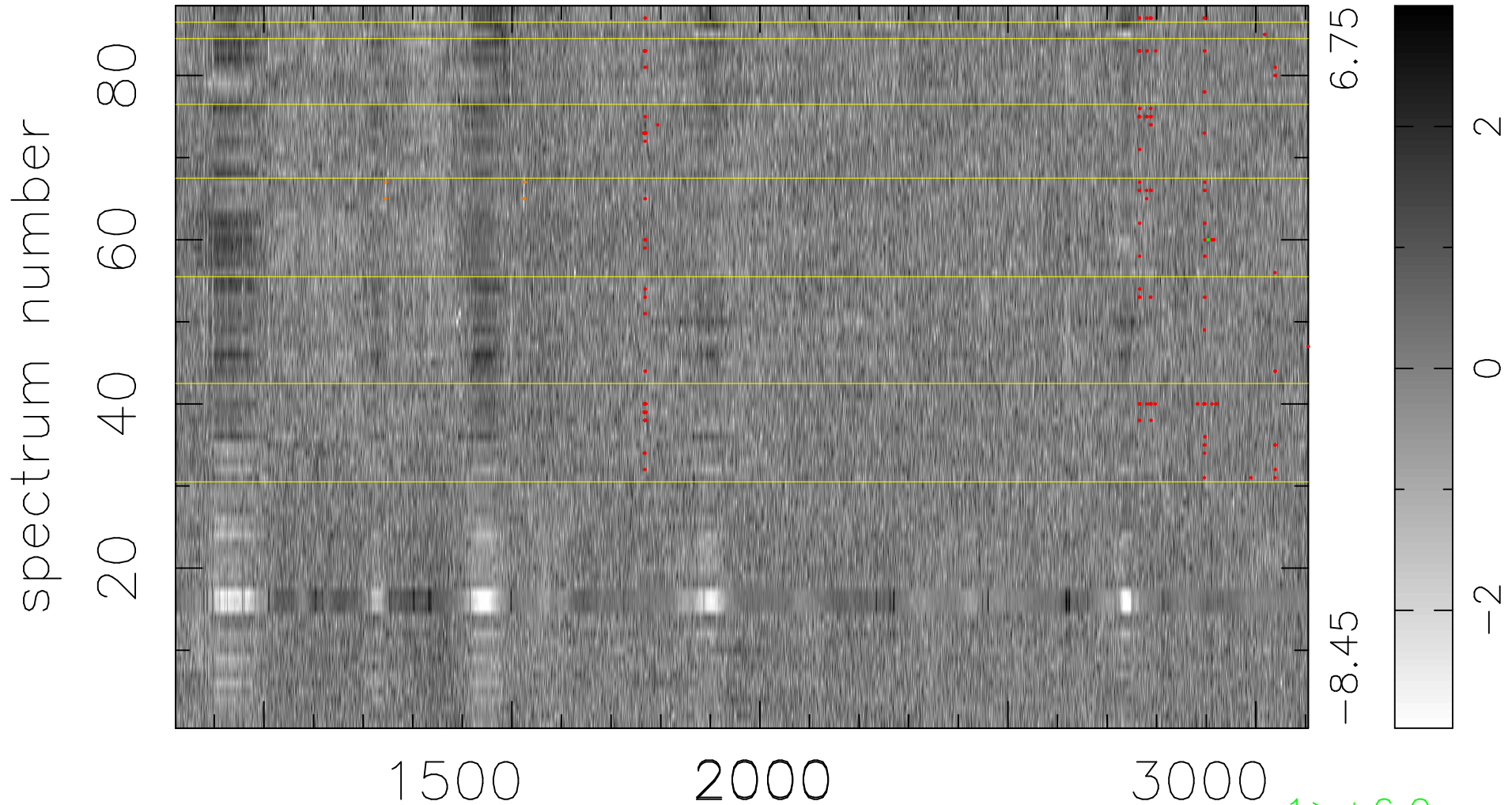


$$\chi(\lambda,t) = (\text{Data} - \text{Model } AC_5) / \sigma \chi$$

$$\chi^2 / (401984 - 5228) = 1.894 \Rightarrow 1.008$$

4568x88



bad:167=0.042% λ (Å) $z = 2.11021$

1 > +6.0σ
5 < -6.0σ