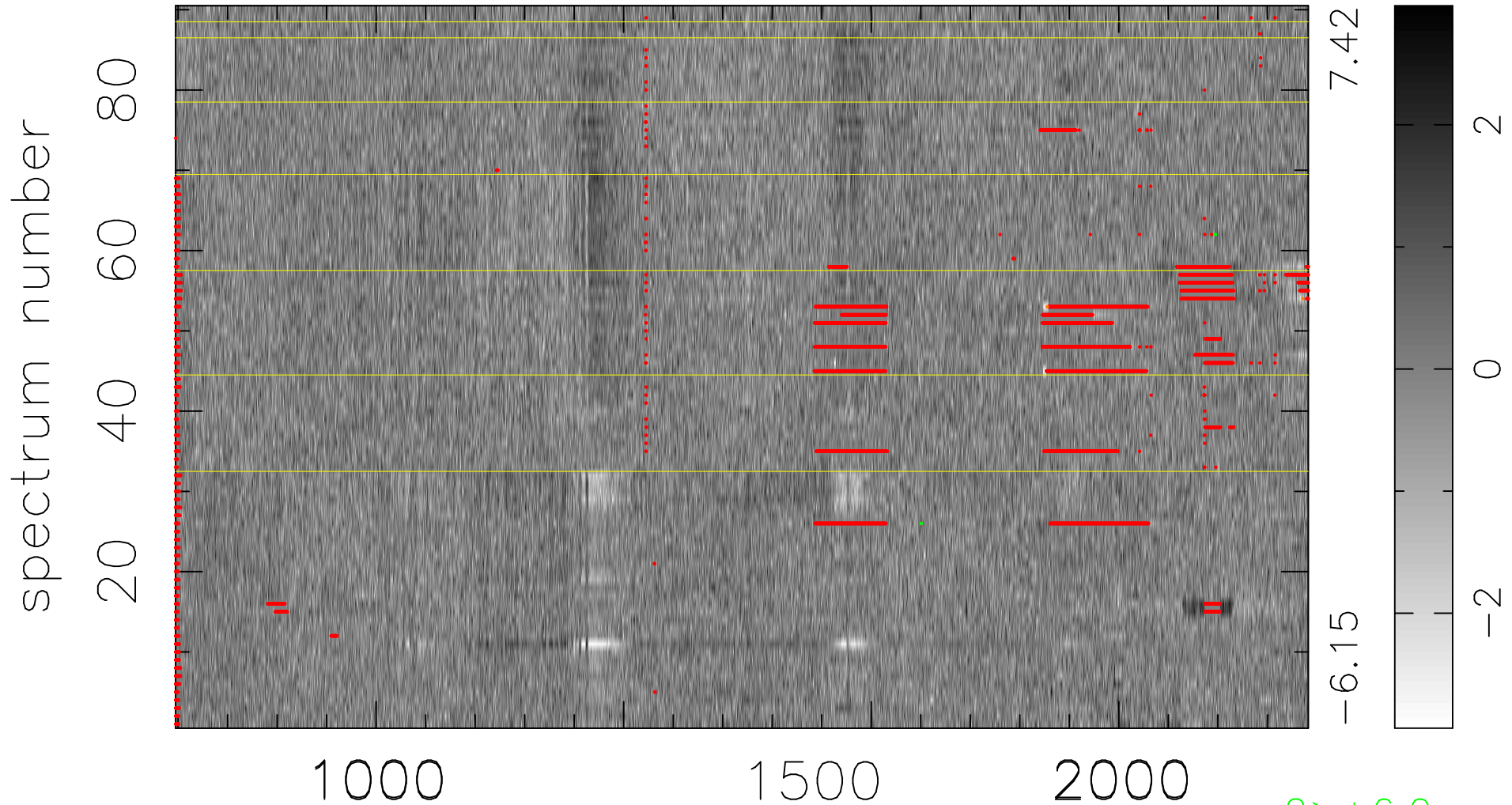


$$\chi(\lambda,t) = (\text{Data} - \text{Model } AC_5) / \sigma \chi$$

$\chi^2 / (411840 - 5146) = 0.970 \Rightarrow 1.008$

4576x90



bad:7519=1.8%

λ (Å) $z = 3.33973$

$2 > +6.0\sigma$

$2 < -6.0\sigma$