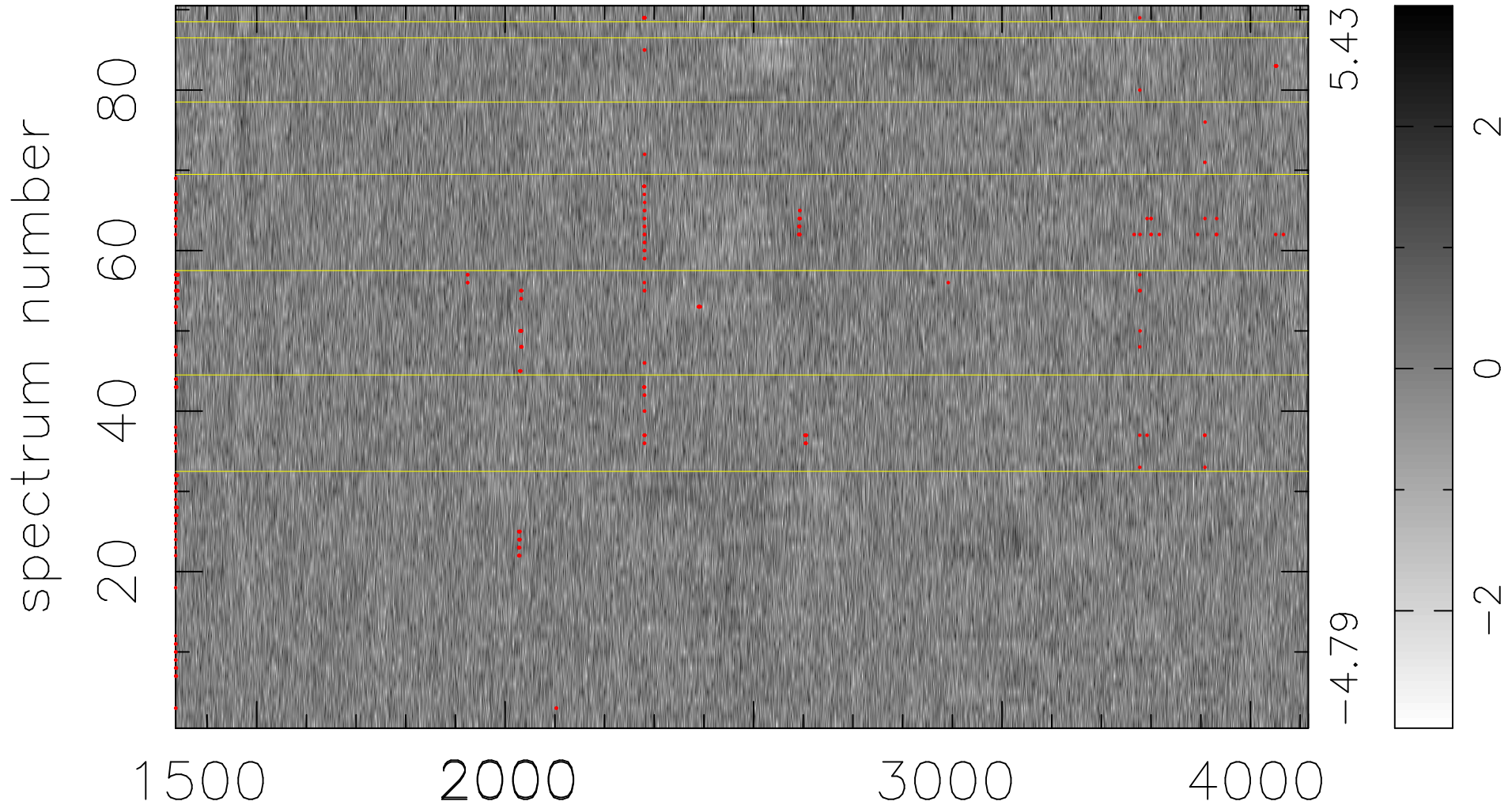


$$\chi(\lambda, t) = (\text{Data} - \text{Model } \text{AC}_5\text{B}_4\text{F}) / \sigma \chi$$

$$\chi^2 / (410400 - 5191) = 0.949 \Rightarrow 1.007$$

4560x90



bad:302=0.074% λ (Å) $z = 1.45718$