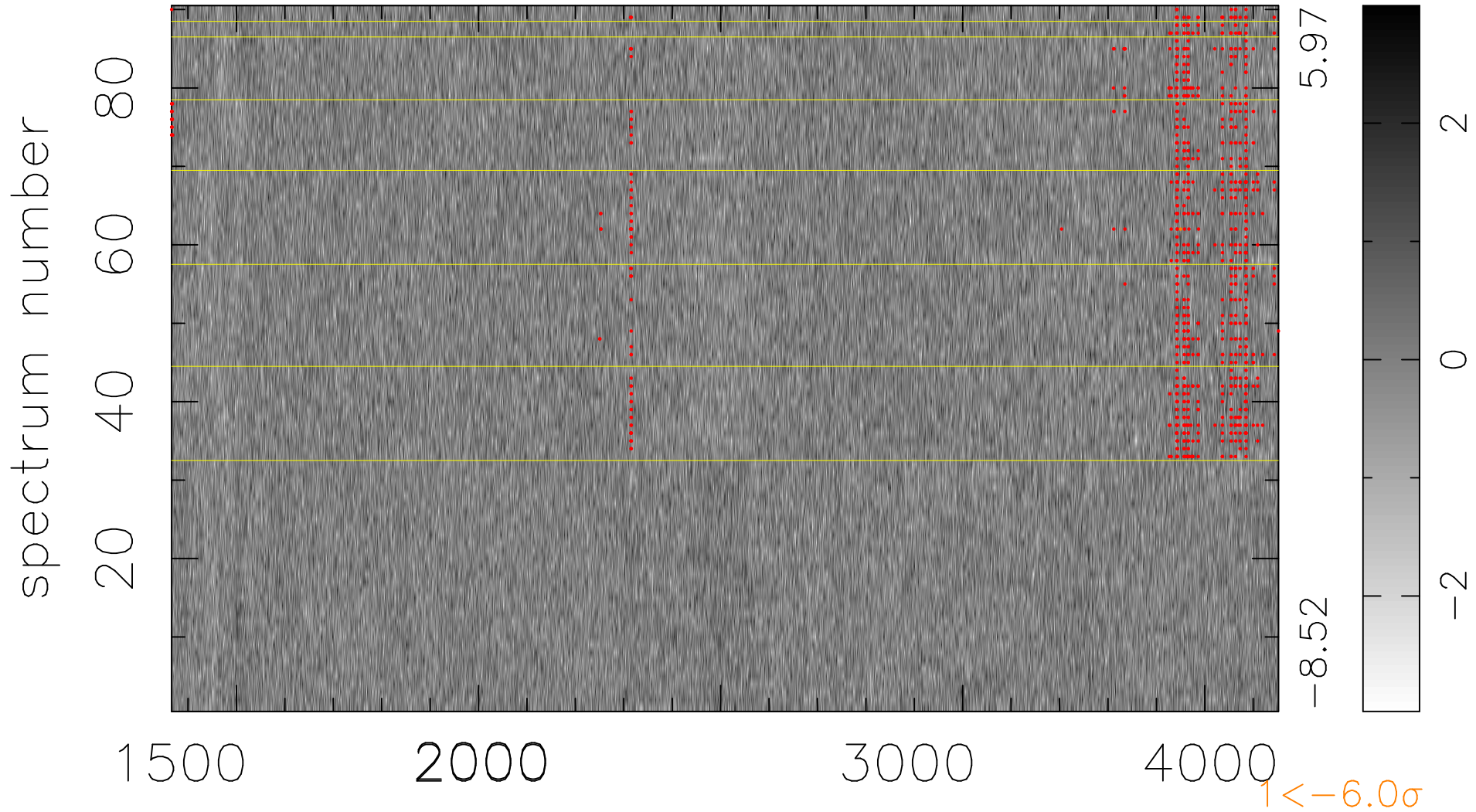


$$\chi(\lambda, t) = (\text{Data} - \text{Model } \text{AC}_5\text{B}_4\text{F}) / \sigma \chi$$

$$\chi^2 / (411570 - 5173) = 0.909 \Rightarrow 1.008$$

4573 × 90



bad:801=0.19%

λ (Å) $z = 1.41815$