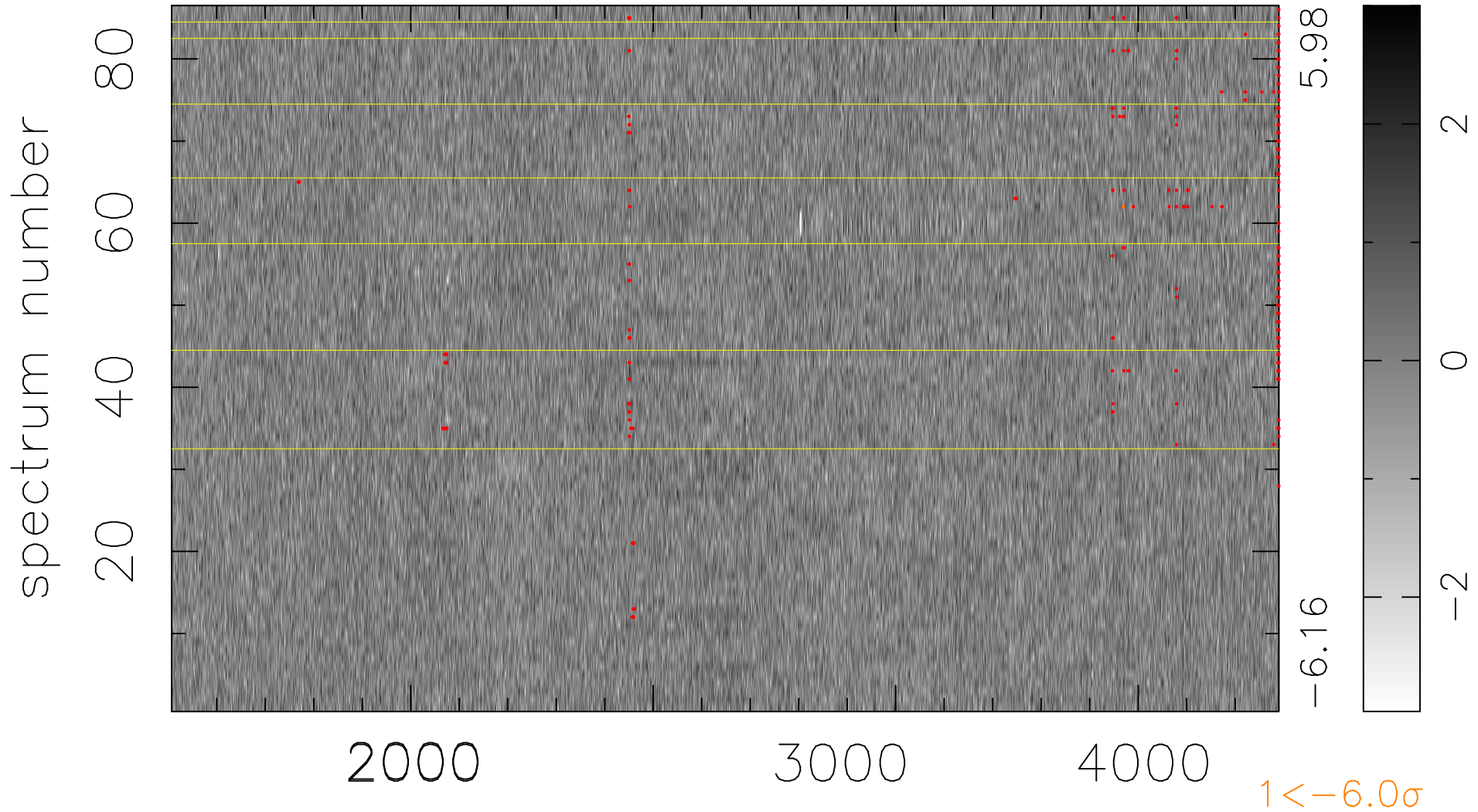


$$\chi(\lambda, t) = (\text{Data} - \text{Model } \text{AC}_5\text{B}_3\text{F}) / \sigma \chi$$

$$\chi^2 / (392762 - 5082) = 0.908 \Rightarrow 1.008$$

4567x86



bad:329=0.084% λ (Å) $z = 1.27190$