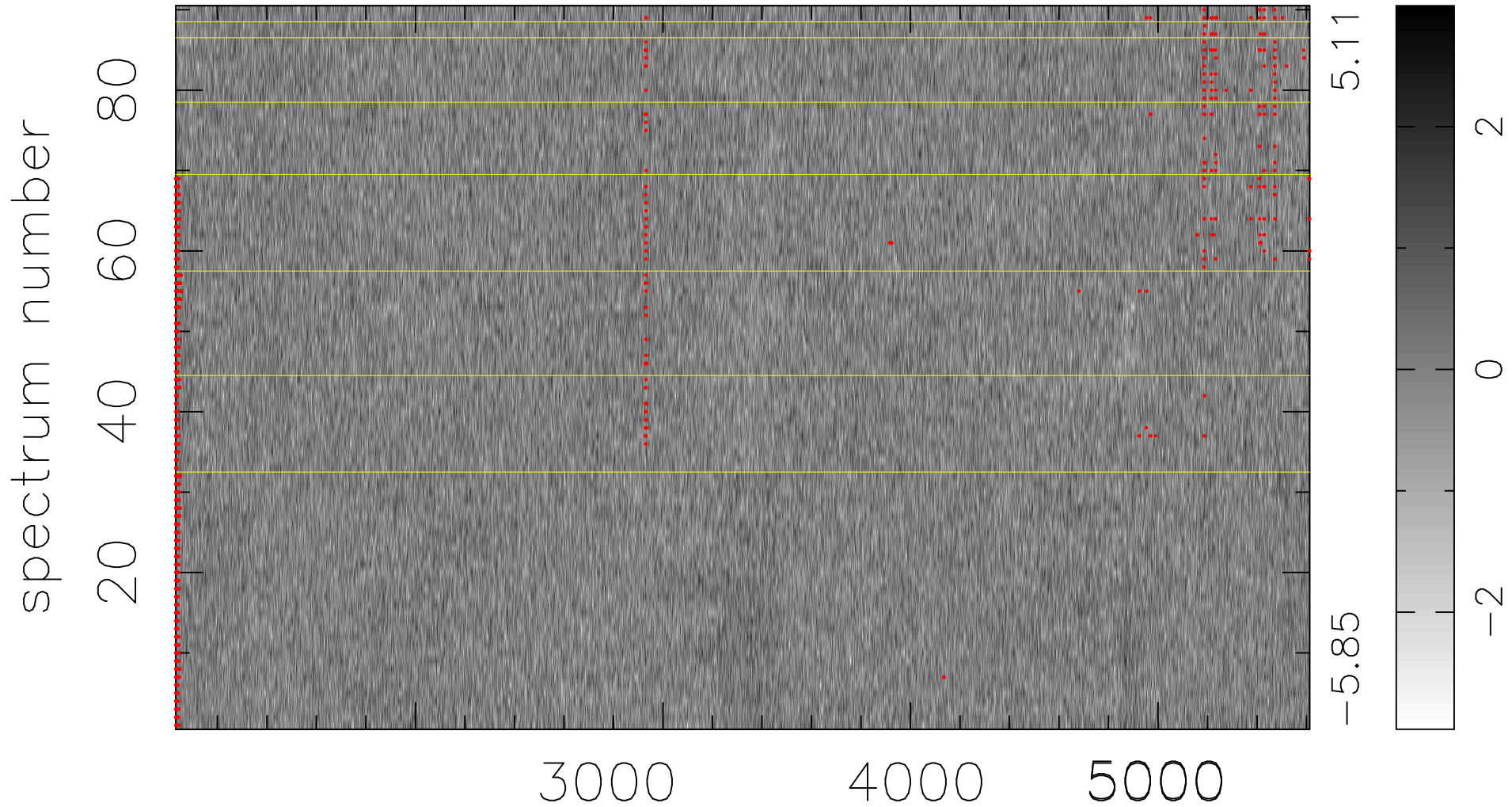


$$\chi(\lambda, t) = (\text{Data} - \text{Model } \text{AC}_5\text{B}_3\text{F}) / \sigma \chi$$

$$\chi^2 / (412290 - 5115) = 0.920 \Rightarrow 1.007$$

4581 × 90



bad:1157=0.28% λ (Å) $z = 0.79219$