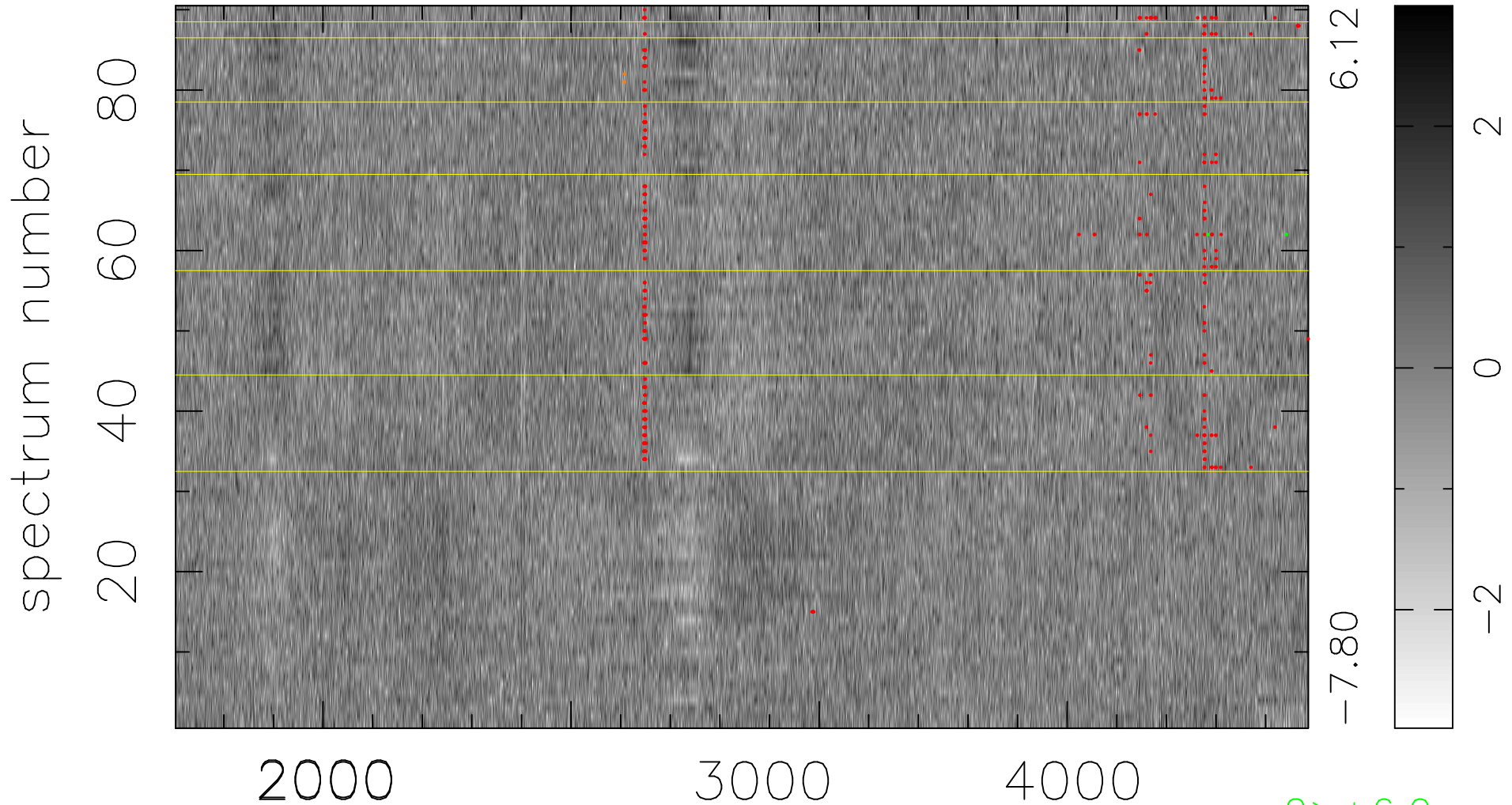


$$\chi(\lambda,t) = (\text{Data} - \text{Model } AC_5) / \sigma \chi$$

$$\chi^2 / (411030 - 4949) = 1.018 \Rightarrow 1.009$$

4567x90



2 > +6.0σ

2 < -6.0σ

bad:413=0.10%

λ (Å) z = 1.07356