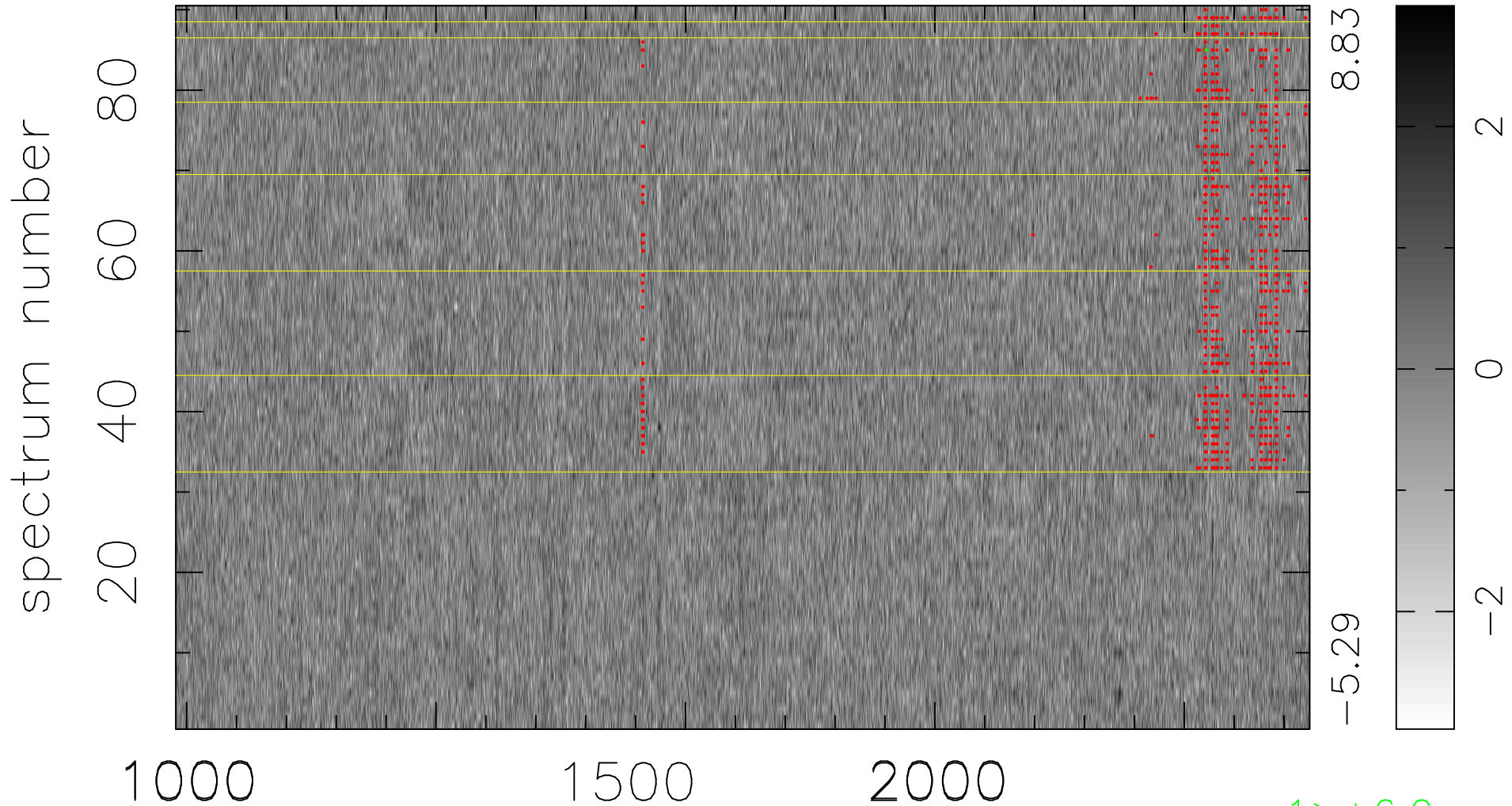


$$\chi(\lambda, t) = ( \text{Data} - \text{Model } \text{AC}_5\text{B}_7\text{F} ) / \sigma \chi$$

$$\chi^2 / (409230 - 5463) = 0.930 \Rightarrow 1.008$$

4547x90



bad:737=0.18%

$\lambda$  (Å)  $z = 2.66045$

$1 > +6.0\sigma$