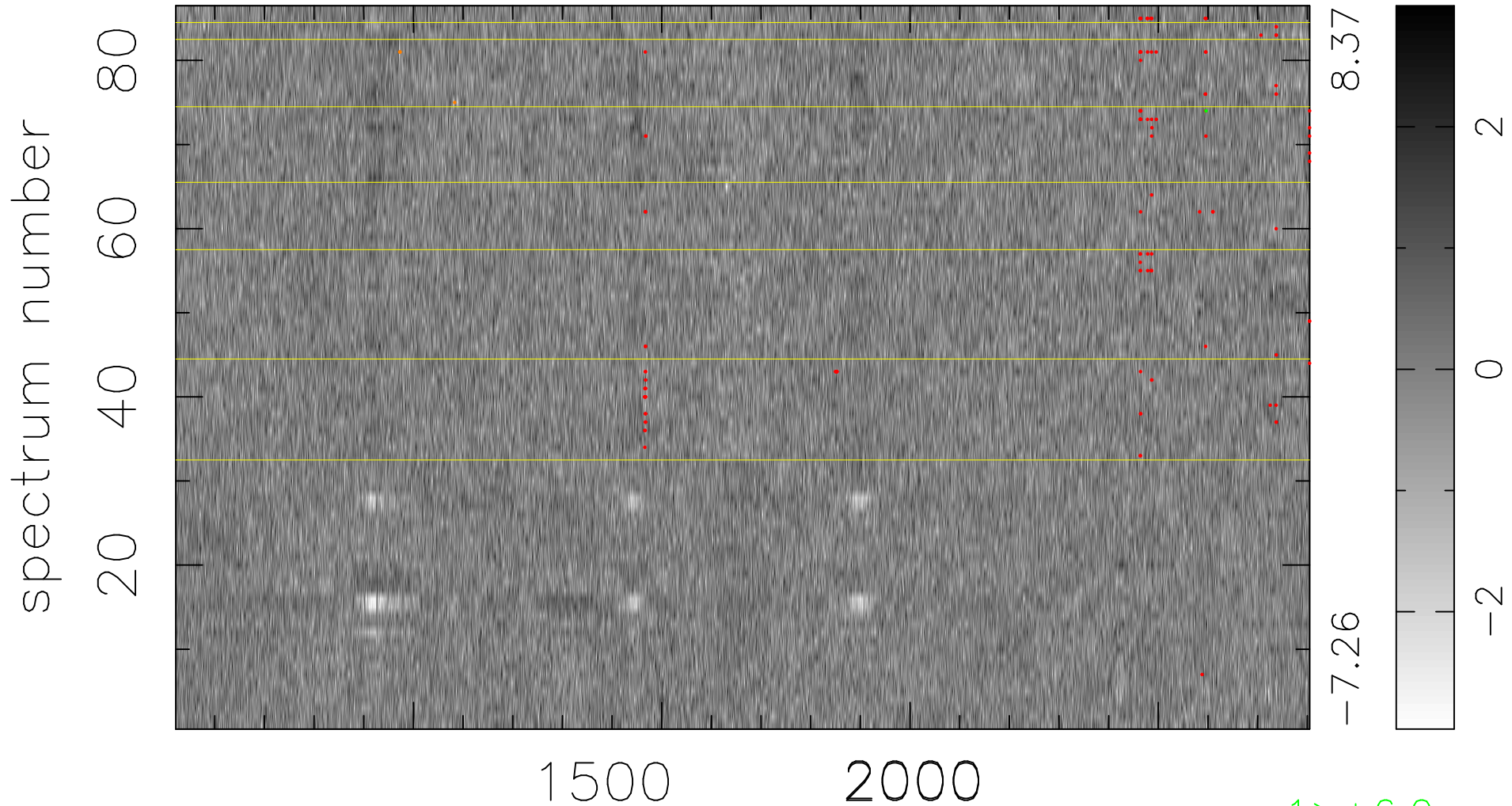


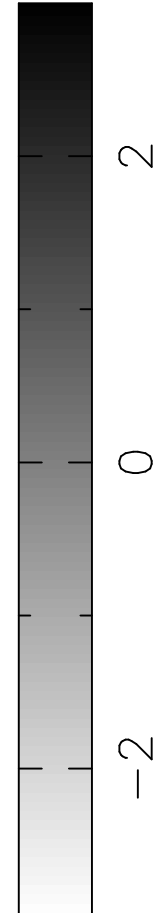
$$\chi(\lambda, t) = (\text{Data} - \text{Model } AC_5) / \sigma \chi$$

$\chi^2 / (392762 - 5201) = 0.930 \Rightarrow 1.008$

4567x86



8.37
-7.26



bad:119=0.030% λ (Å) $z = 2.57346$

1 > +6.0σ
3 < -6.0σ