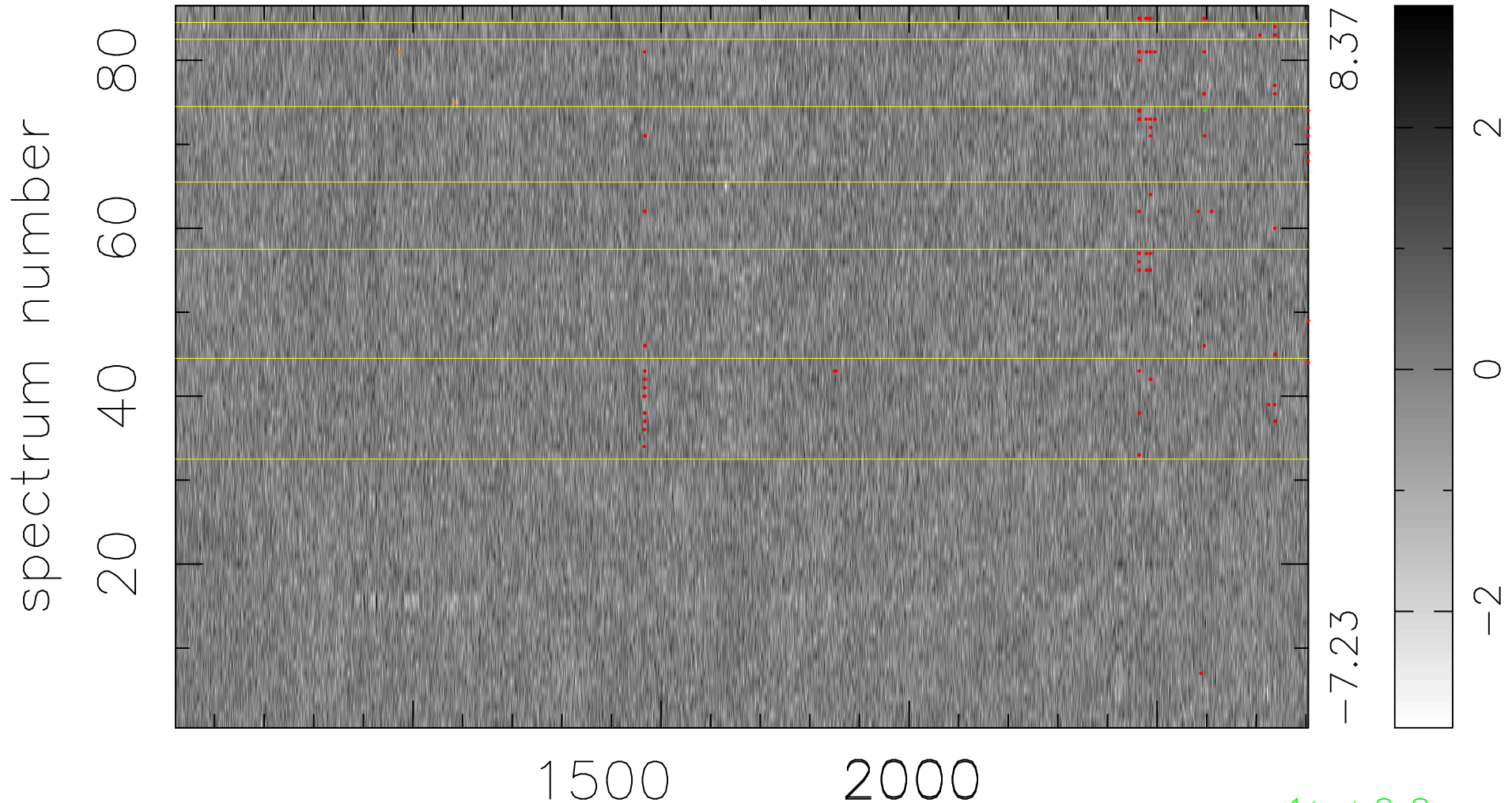


$$\chi(\lambda, t) = (\text{Data} - \text{Model } \text{AC}_5\text{B}_7\text{F}) / \sigma \chi$$

$$\chi^2 / (392762 - 5458) = 0.916 \Rightarrow 1.009$$

4567x86



bad:119=0.030% λ (Å) $z = 2.57346$

1 > +6.0σ
3 < -6.0σ