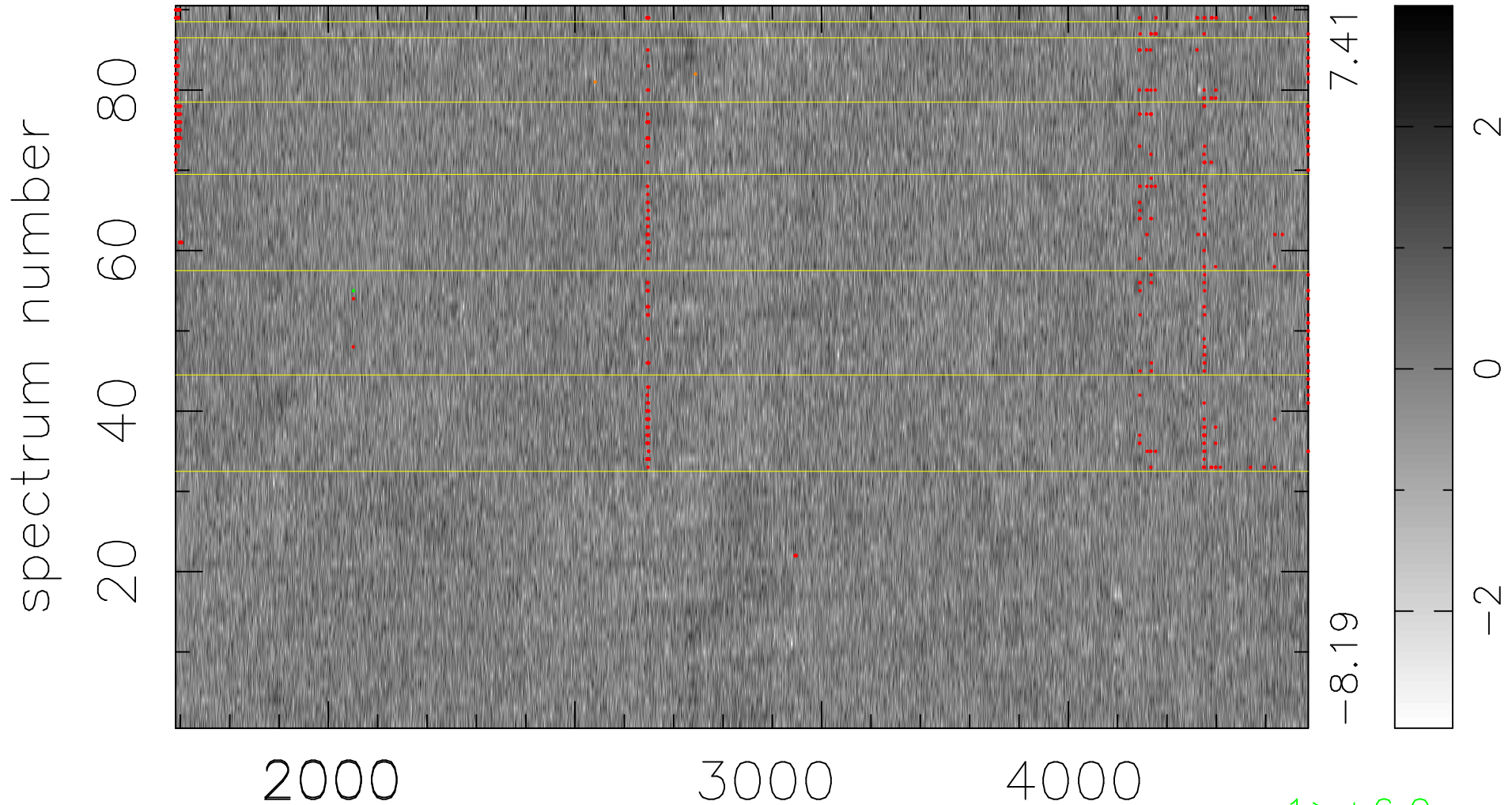


$$\chi(\lambda, t) = (\text{Data} - \text{Model AC}_5\text{F}) / \sigma \chi$$

$$\chi^2 / (413370 - 5069) = 0.982 \Rightarrow 1.007$$

4593x90



bad:617=0.15%

λ (Å) $z = 1.07455$

1 > +6.0σ

2 < -6.0σ