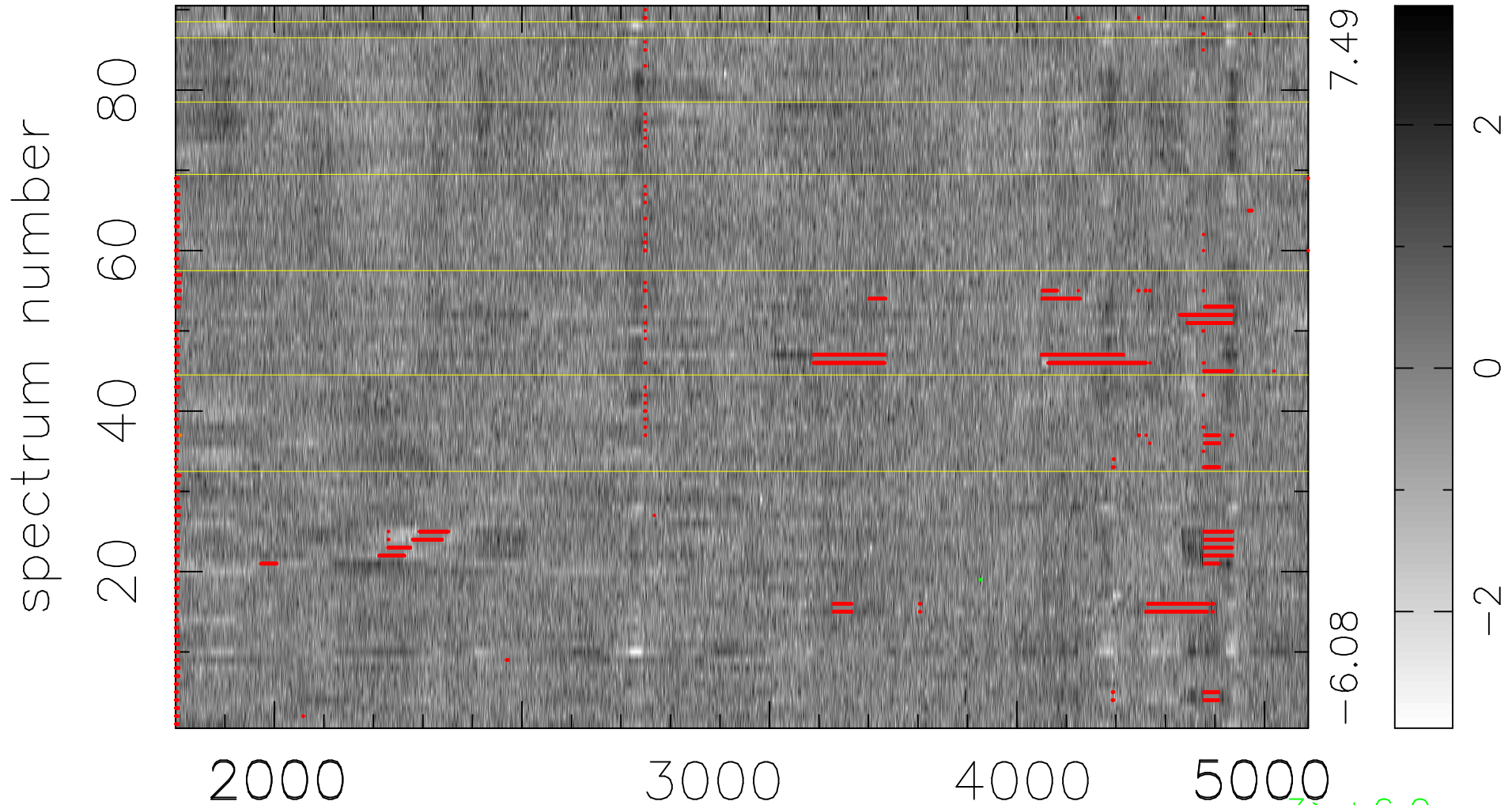


$$\chi(\lambda, t) = ( \text{Data} - \text{Model AC}_5\text{F} ) / \sigma \chi$$

$$\chi^2 / (411930 - 5059) = 0.915 \Rightarrow 1.008$$

4577x90



bad:5120=1.2%

$\lambda$  (Å)  $z = 0.98021$

3 > +6.0σ

1 < -6.0σ