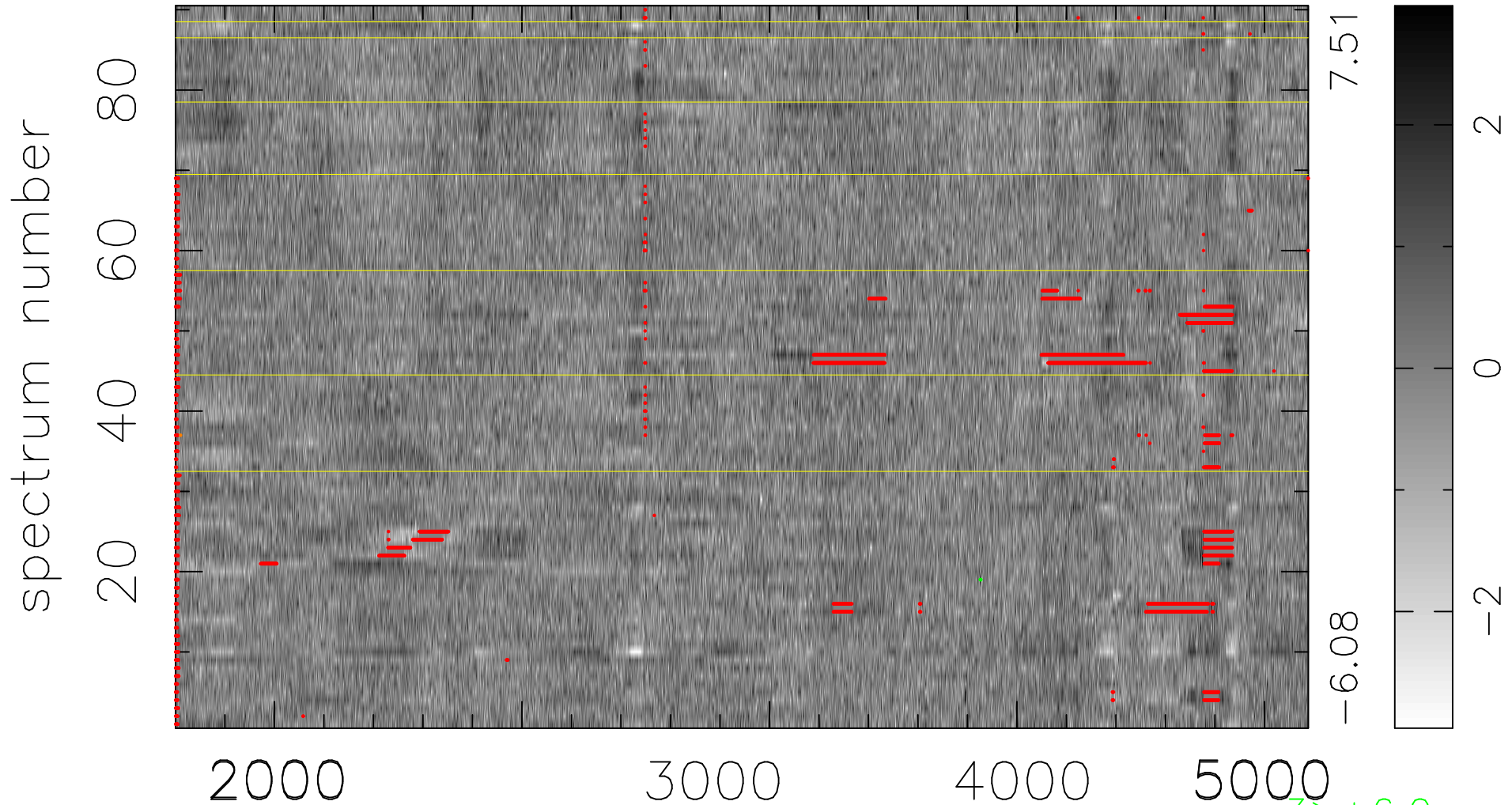


$$\chi(\lambda,t) = (\text{Data} - \text{Model } AC_5) / \sigma \chi$$

$$\chi^2 / (411930 - 4969) = 0.915 \Rightarrow 1.008$$

4577x90



bad:5120=1.2%

λ (Å) $z = 0.98021$

3 > +6.0σ

1 < -6.0σ