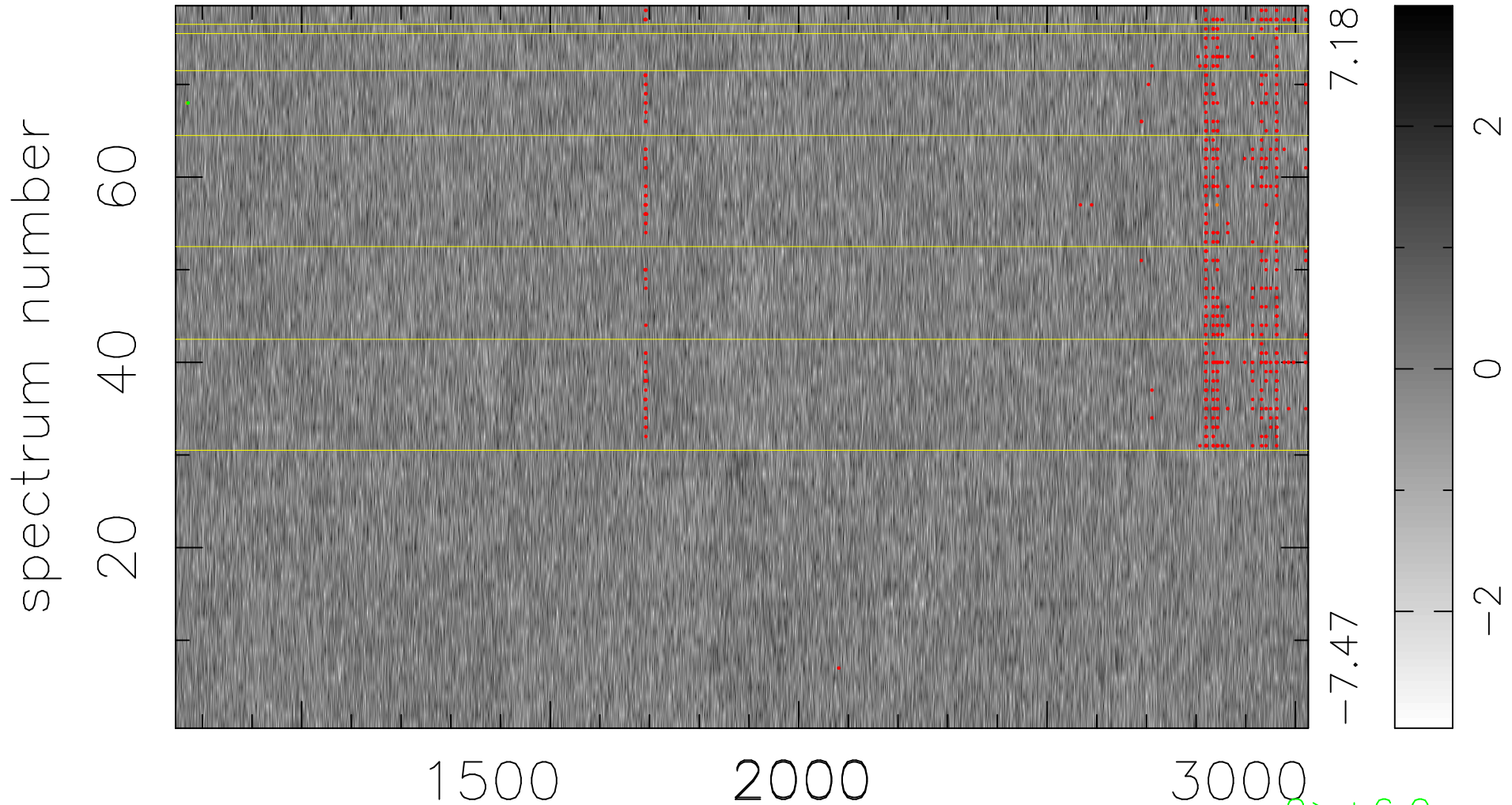


$$\chi(\lambda, t) = (\text{Data} - \text{Model AC}_5\text{F}) / \sigma \chi$$

$$\chi^2 / (355680 - 5226) = 0.889 \Rightarrow 1.008$$

4560 × 78



7.18

-7.47

2

0

-2

2 > +6.0σ

3 < -6.0σ

bad:530=0.15%

λ (Å) z = 2.22161