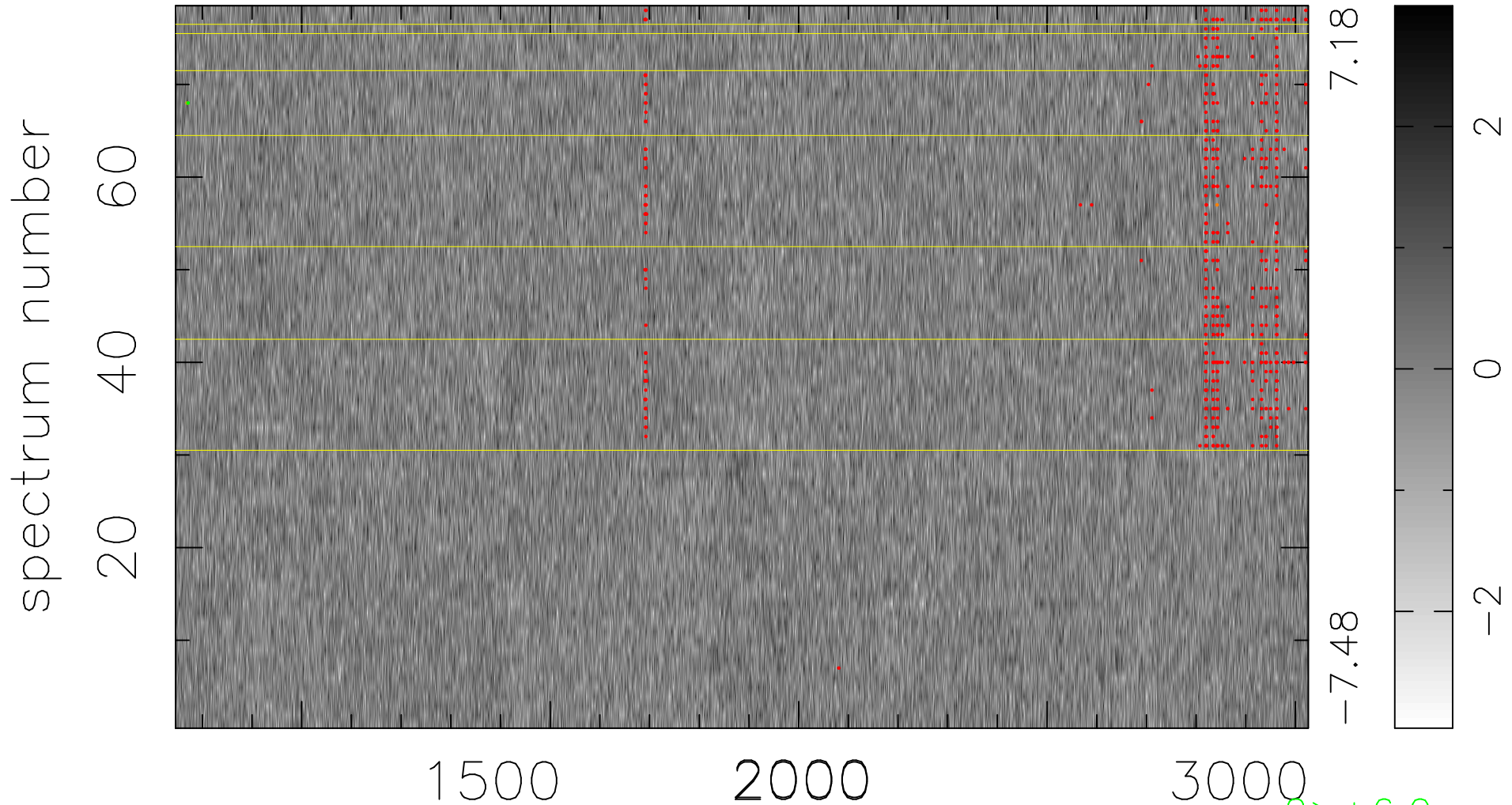


$$\chi(\lambda,t) = ( \text{Data} - \text{Model } AC_5 ) / \sigma \chi$$

$$\chi^2 / (355680 - 5148) = 0.889 \Rightarrow 1.008$$

4560x78



bad:530=0.15%

$\lambda$  (Å)  $z = 2.22161$

2 > +6.0σ

3 < -6.0σ