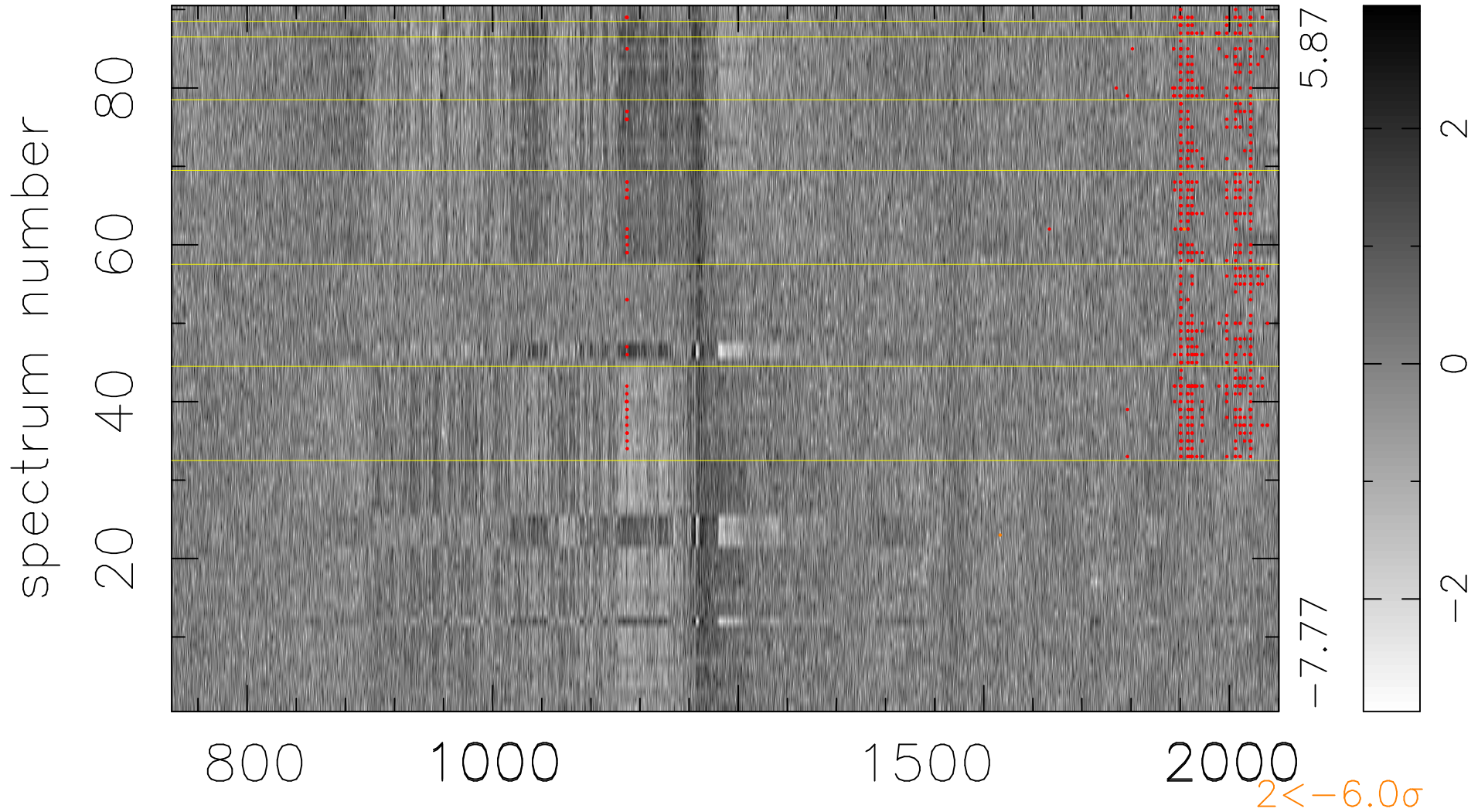


$$\chi(\lambda, t) = (\text{Data} - \text{Model } \text{AC}_5\text{B}_6\text{F}) / \sigma \chi$$

$$\chi^2 / (405900 - 5314) = 1.061 \Rightarrow 1.015$$

4510×90



bad:643=0.16%

λ (Å) $z = 3.91856$