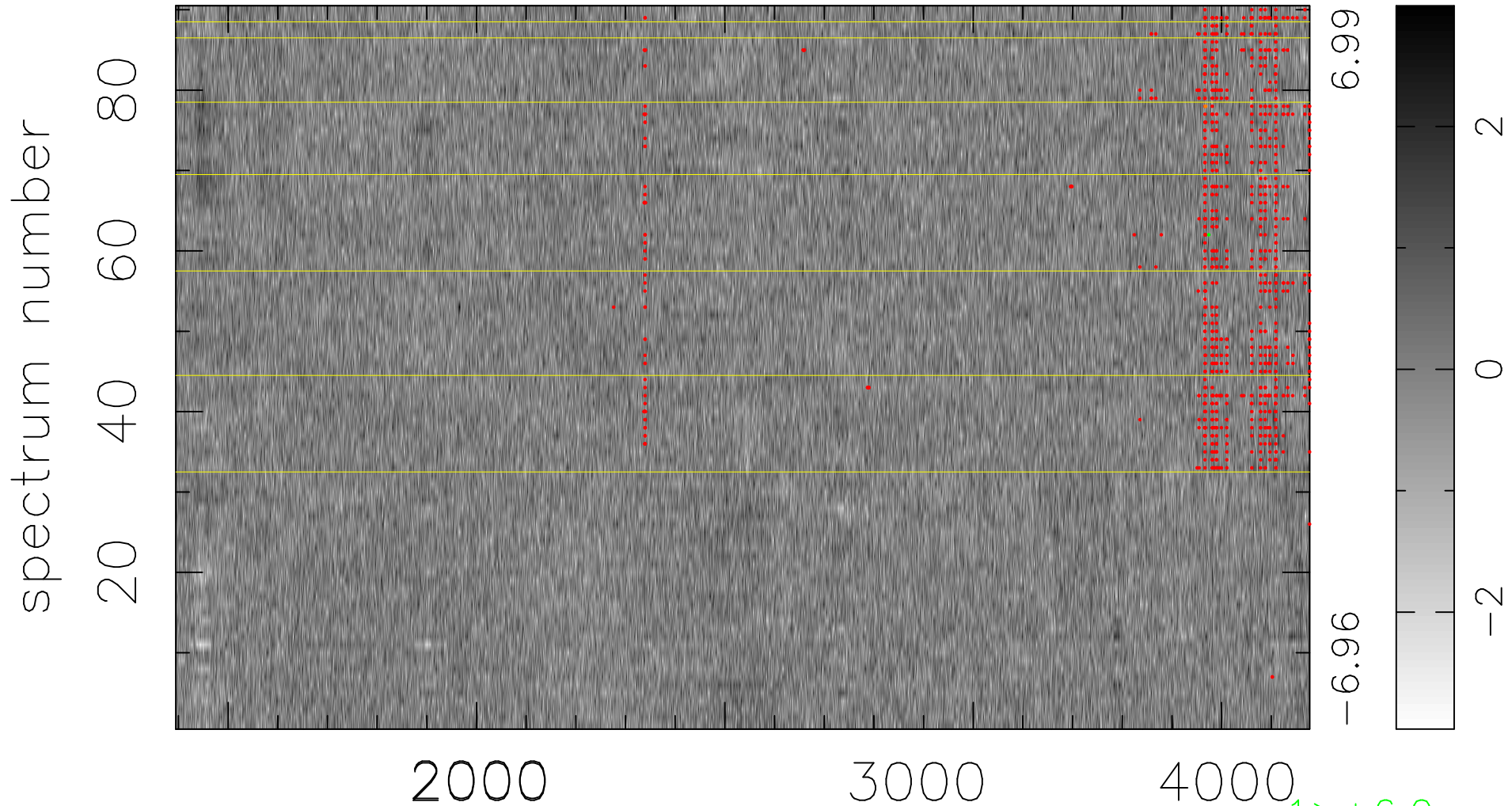


$$\chi(\lambda,t) = (\text{Data} - \text{Model } AC_5) / \sigma \chi$$

$$\chi^2 / (410940 - 4959) = 0.910 \Rightarrow 1.006$$

4566x90



bad:857=0.21%

λ (Å) $z = 1.39147$

1 > +6.0σ

2 < -6.0σ