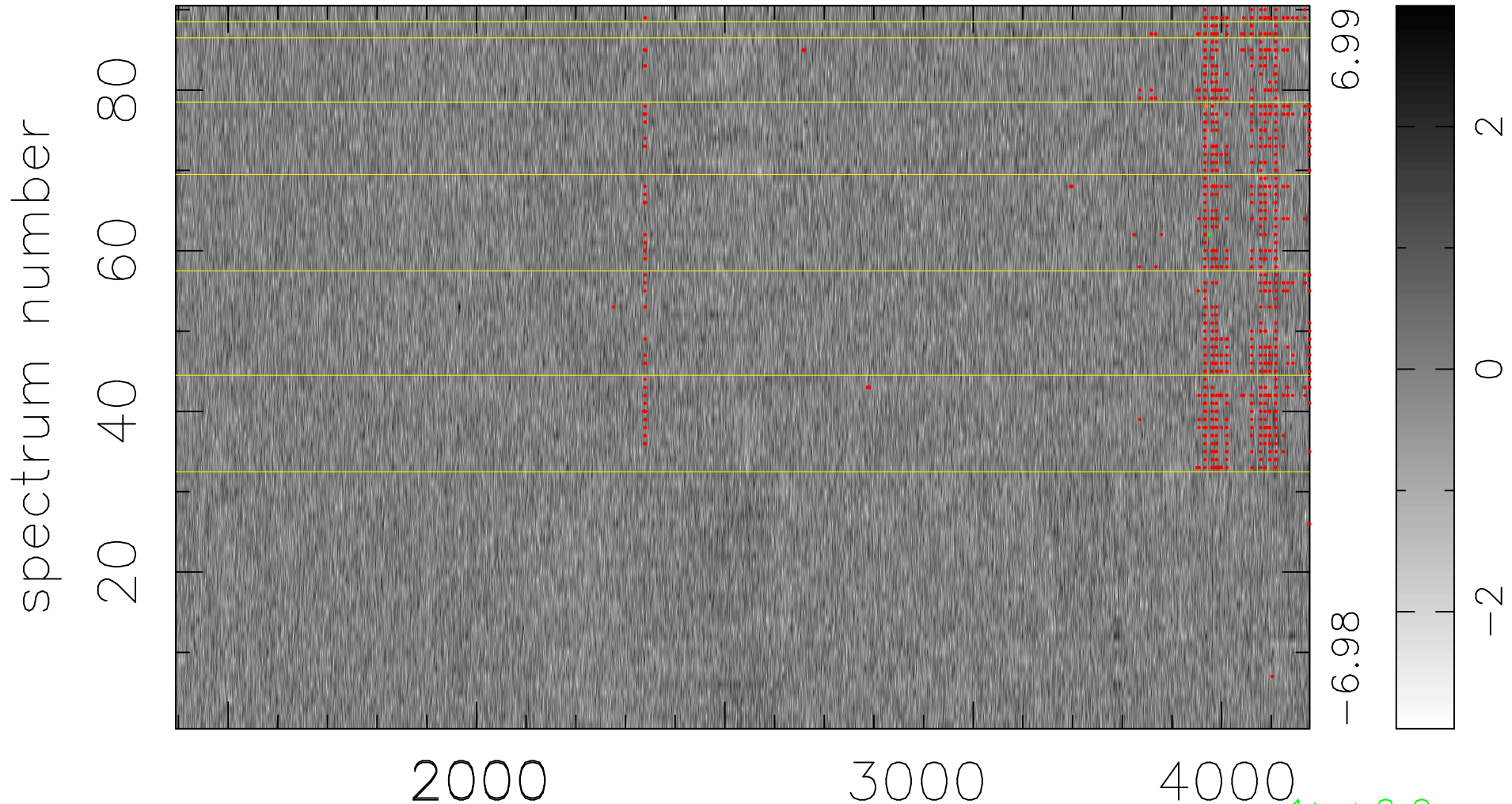


$$\chi(\lambda, t) = (\text{Data} - \text{Model } \text{AC}_5\text{B}_4\text{F}) / \sigma \chi$$

$$\chi^2 / (410940 - 5219) = 0.900 \Rightarrow 1.007$$

4566 × 90



bad:857=0.21%

λ (Å) $z = 1.39147$

1 > +6.0σ

2 < -6.0σ