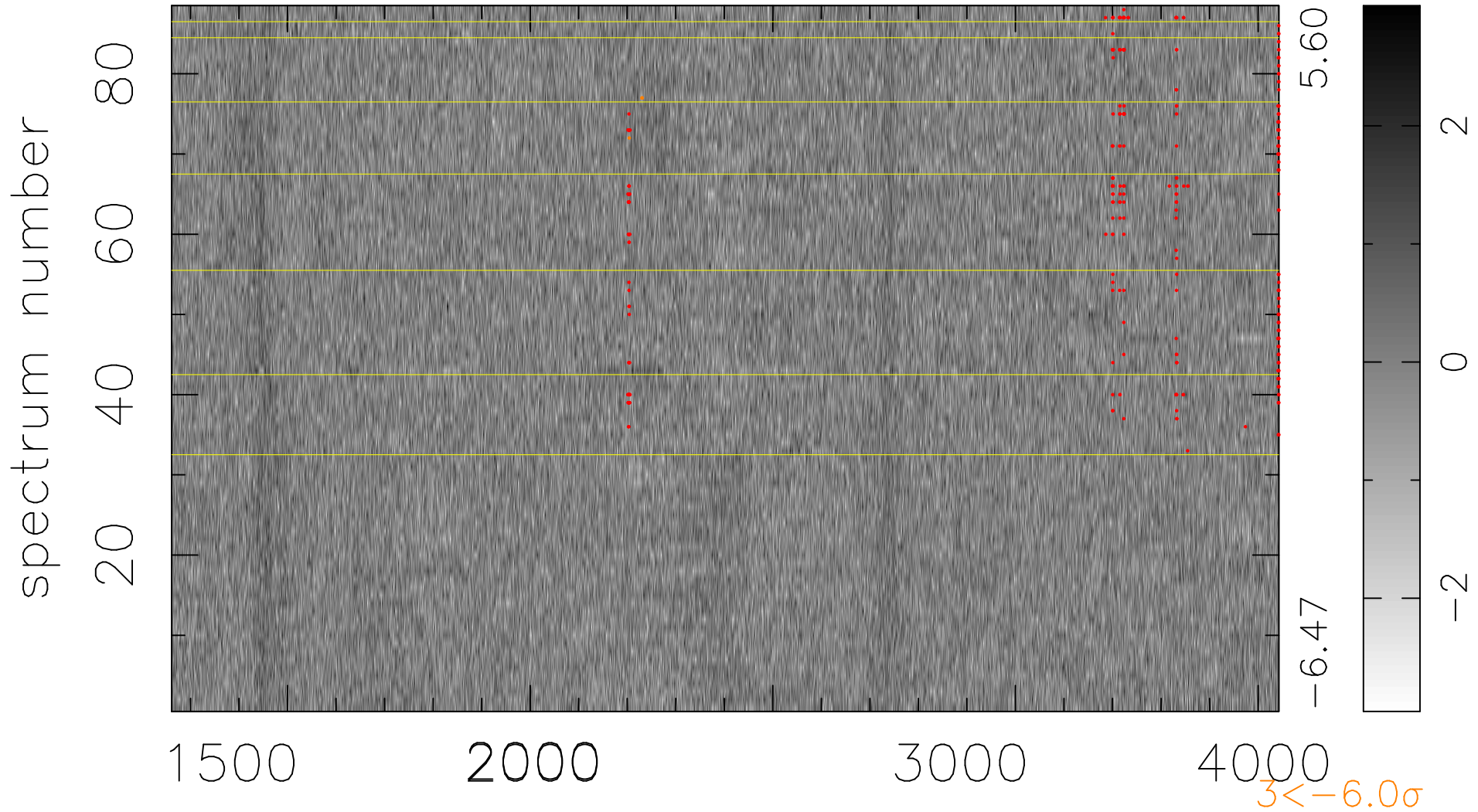


$$\chi(\lambda, t) = ( \text{Data} - \text{Model } \text{AC}_5\text{B}_4\text{F} ) / \sigma \chi$$

$$\chi^2 / (401632 - 5183) = 0.912 \Rightarrow 1.009$$

4564x88



bad:302=0.075%  $\lambda$  (Å)  $z = 1.54539$