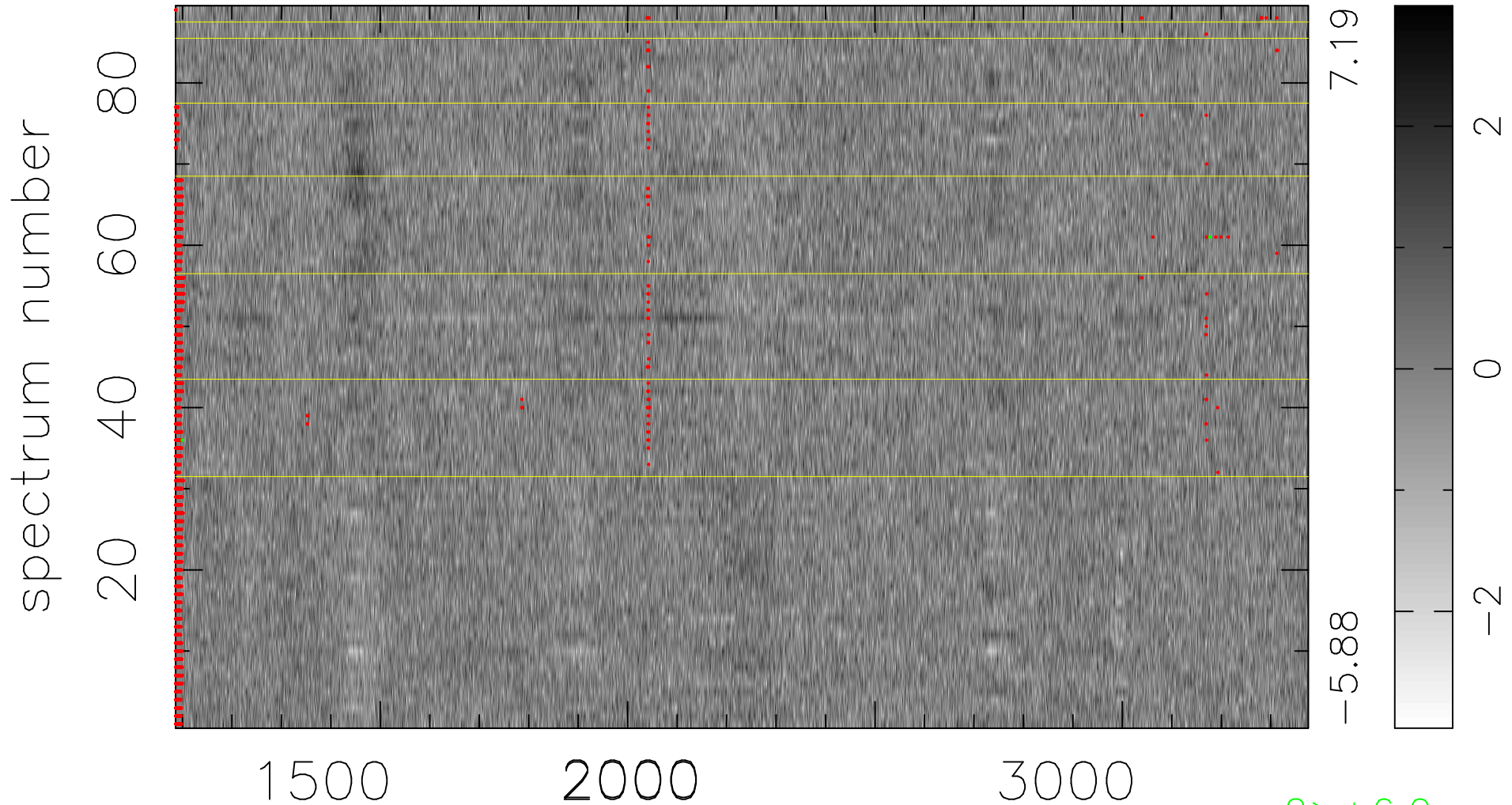


$$\chi(\lambda, t) = ( \text{Data} - \text{Model AC}_5\text{F} ) / \sigma \chi$$

$$\chi^2 / (407620 - 5149) = 0.928 \Rightarrow 1.007$$

4580x89



bad:1877=0.46%  $\lambda$  (Å)  $z = 1.74251$

2 > +6.0 $\sigma$