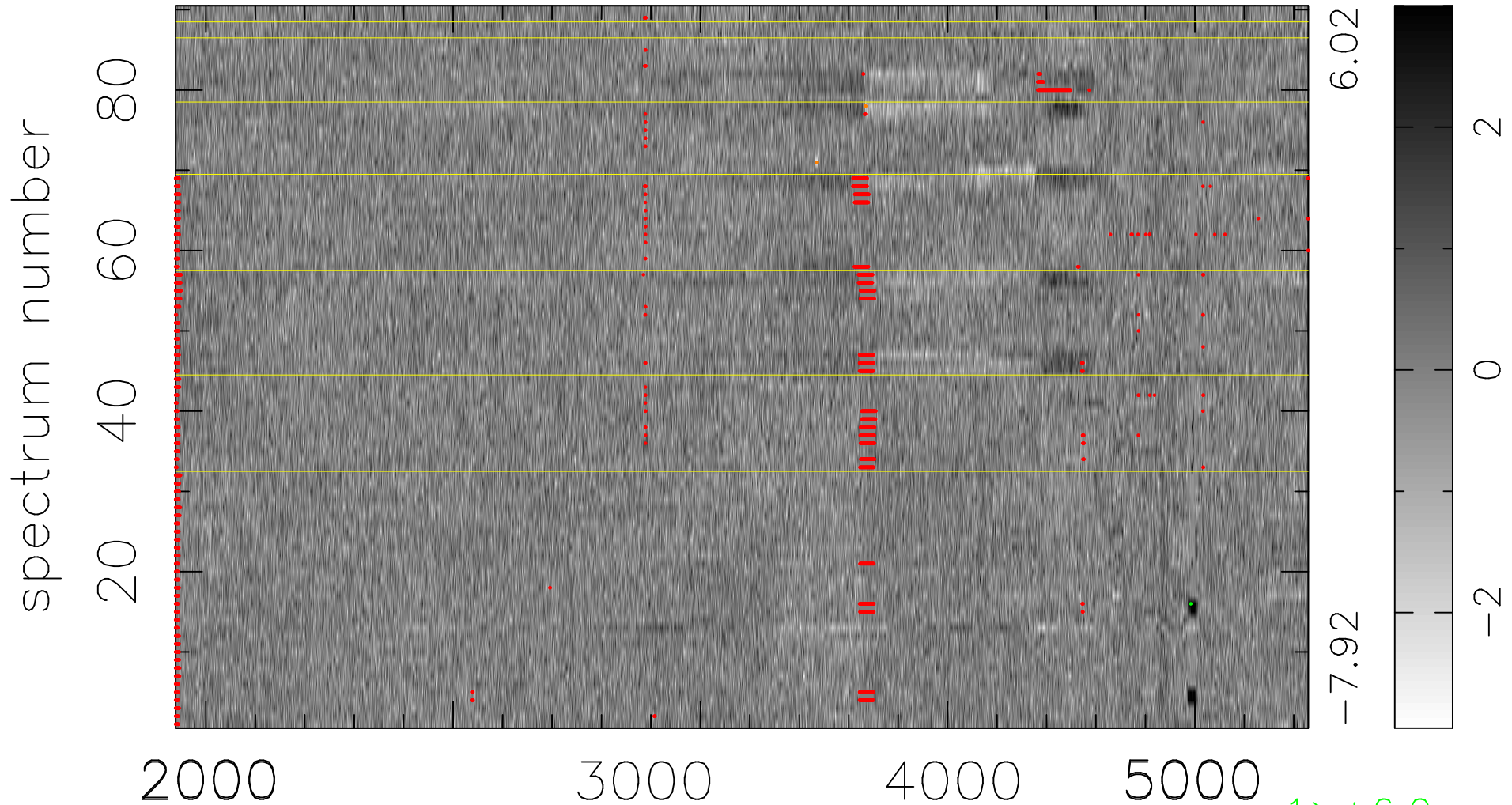


$$\chi(\lambda, t) = (\text{Data} - \text{Model } \text{AC}_5\text{B}_3\text{F}) / \sigma \chi$$

$$\chi^2 / (412380 - 5117) = 0.978 \Rightarrow 1.008$$

4582x90



bad:2669=0.65% λ (Å) z = 0.85669

1 > +6.0σ

8 < -6.0σ