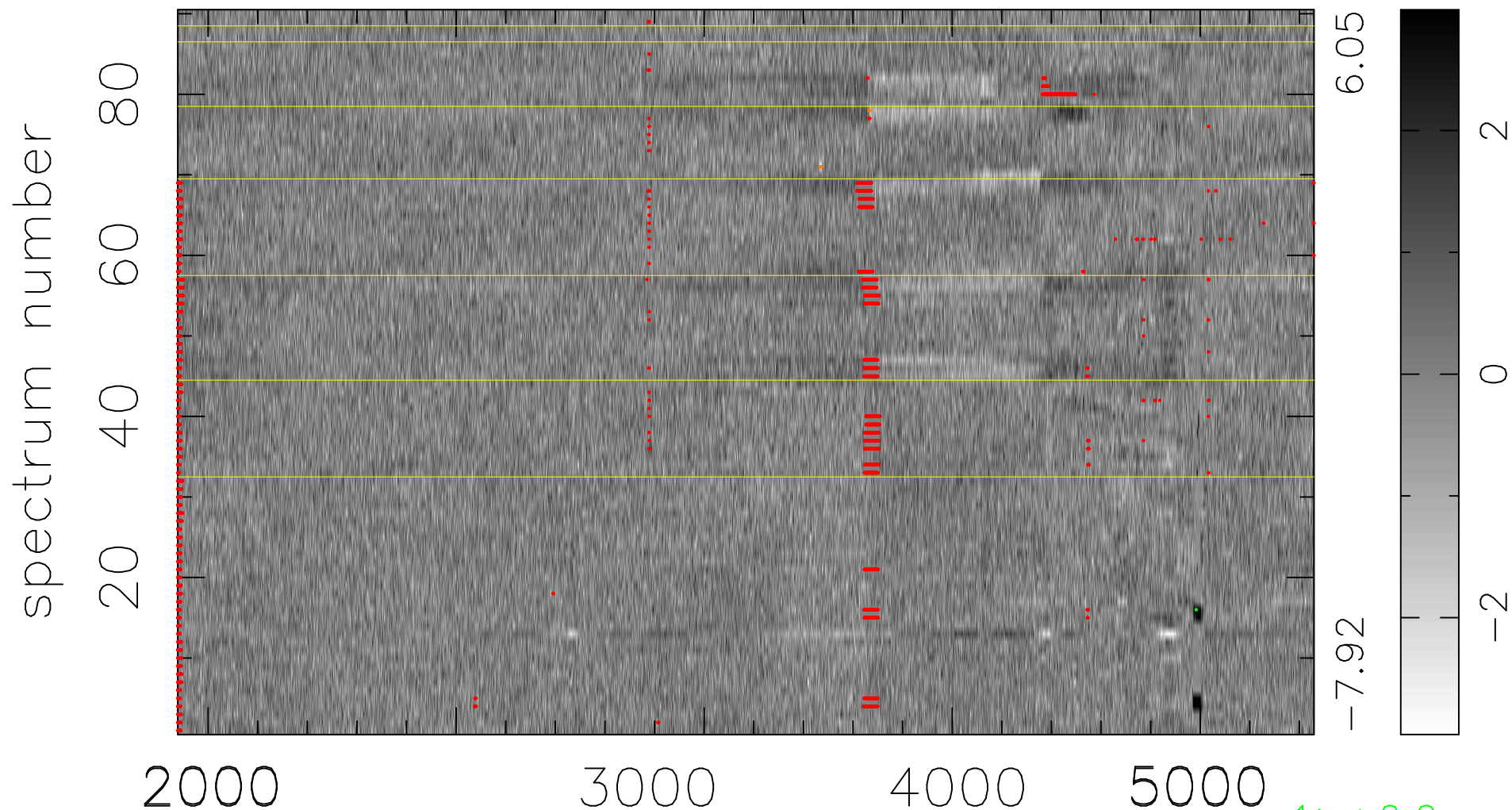


$$\chi(\lambda, t) = ( \text{Data} - \text{Model AC}_5\text{F} ) / \sigma \chi$$

$\chi^2 / (412380 - 4969) = 0.992 \Rightarrow 1.007$

4582 x 90



bad:2669=0.65%  $\lambda$  (Å)  $z = 0.85669$

1 > +6.0σ

8 < -6.0σ